



The Roeland Parker

Newsletter for the City of Roeland Park

January - March 2017

Cancelled due to lack of
vendor response. Any
questions, contact
mkgliniecki@msn.com

Lovey Dovey Art Mart

February 4, 2017

1:00 - 4:00

Roeland Park Community Center
4850 Rosewood Drive
Roeland Park, Kansas

**Gifts for Sweethearts of
all ages!**



Spring Wine Fling

March 25

A Fundraiser for an R Park
Community Shelter

Mark your calendar to attend the "Spring Wine Fling," a spirited evening featuring local wines from five Kansas vineyards, gourmet appetizers paired with wine from Houlihan's in Fairway, and delicious dessert items from "Nothing Bundt Cakes" and "Sweet Ideas." Setting the mood will be light classical music performed by "Jeremy Martin's Cello and Fellows". This social event will be held on Saturday evening, March 25, 2017, from 7-10 p.m. at the Roeland Park Community Center. Tickets are on sale beginning January 1st. You can purchase them online at www.brownpapertickets.com or locally by emailing rparktickets@outlook.com. Presale tickets cost \$35 and will cost \$40 at the door the night of the event. Come taste amazing wines and appetizers, socialize with your friends and neighbors, and join the community support in improving R Park with a much-needed shade structure.

The Roeland Park Community Events Committee Presents the



2017 Roeland Park Easter EGG Hunt!

Saturday, April 15

11 am @ Nall Park*

The hunt is on at
11:30 am, sharp!

*Rain? We'll be at the Roeland Park Sports Dome
Visit Facebook & www.RoelandPark.org for more info

Save The Date: Roeland Park Annual Citywide Block Party
Saturday, June 10, 2017 @ R-Park



Save the Date!



Arbor Day Celebration
April 29th, 2017 @ 11:00 AM
R Park



Celebrate Arbor Day



Plant A Tree



Recycle your Christmas tree at the old pool site at 48th Street and Roe Blvd. from Dec 27th to Jan 27th. Please remove all decorations, tinsel and lights. Regular trash or yard waste pick up does not include Christmas tree collection.



Police Chief's Corner

I'm sure most of you have heard about some of the recent phone and internet scams going on around the country. If it sounds too good to be true, it is probably a scam. If you ever have any questions about a particular company or person asking to buy or sell you something, **SLOW DOWN** and think it through. We are always here to help you with a financial crime investigation, however they are very hard to prosecute if you do not know the person or their location. Another concern is financial crimes against the elderly. Every day, thousands of elderly persons become victims of financial crimes. Whether the crime is fraud committed by strangers or is financial exploitation by relatives and caregivers, most of these crimes are under-reported. Studies estimate that seniors lose more than \$2.6 billion per year as a result of scams and other forms of financial exploitation. Be alert, ask for proof of a business license, physical address, references, and document all transactions to ensure you will not become a victim. Give us a call if you need any assistance. Stay safe!

Chief Morris

To contact Chief Morris, call 913-677-3363 or email him at emorris@roelandpark.org

STAFF PROFILE: JOHN JACOBSON

Meet John Jacobson, the City's new Building Official. John comes to us with 26 years of experience as a building official and community development director with the City of Lansing. We are very lucky to have him!

Welcome to Roeland Park John! What are your initial impressions of the City?

"Love, love the town and its residents! There is a sense of self here that is uncommon in most areas I have been. The residents are extremely welcoming and have a clear understanding of who and what they as a community want to be."

What do you enjoy most about being a Building Official?

"Ensuring that the vision of the community is completed through its construction. That construction leaves a lasting impression of the people involved in its building. Creativity manifests in many ways, for me construction is my medium."



What do you hope to achieve as the Building Official with Roeland Park?

"To bring every tool in my toolbox gathered over the last three decades to help achieve the collective vision of the community and to assist in maintaining that character of Roeland Park that lured me here to begin with."

If you were to have lunch with anyone dead or alive, who would it be and why?

"Leonardo daVinci; the high water mark for "outside of the box" thinkers. I view him as a source of unmatched creativity."

What's your favorite food?

"Surf and Turf/ Mexican"

What kind of music do you like?

"All kinds. I played in bands for years. Right now, I have Chris Stapleton in heavy rotation."

To contact John, call City Hall at 913-722-2600 or email him at jjacobson@roelandpark.org



Did you know that Roeland Park recently joined the **Tobacco 21** coalition? The city is now part of a group of communities throughout the country including several cities in the metro which have taken measures to promote a healthier and safer environment for its residents. Ordinance No. 943 makes it unlawful to purchase products containing tobacco and nicotine for those under the age of 21. However, those with a valid military ID may continue to purchase tobacco products if they are at least 18 years of age. By adopting the Tobacco 21 program the city will work to combat smoking which remains the leading cause of preventable death worldwide and is responsible for nearly half a million deaths in the U.S. every year.

**THANK YOU
R PARK DONORS!**

INDIVIDUALS

Terry Lee & Diane Thompson
John & Joan Anderson
Roger & Linda Sprague
Annabelle Eason
Sara & Cory Coe
Nancy Johnston
Sarah Martin
Loretta Carson
Tom & Judy Hyde
Gretchen & Ardie Davis
Patrick Franken
Laura Yankoviz
Police Chief John Morris
Gary & Theresa Bronkema
Corliss Jacobs
Emma Krause
Sarah and Alan Krause
Eric Vidoni
Mary Kenney
Tom Boller and Tan Nguyen
Trudy Nepstad
Jean Ternus
Sara & Sean Lobdell
Stephen & Dolores Schroff
Joni & Cal Bender
Everyone who purchased tickets to the "Chili Jamboree"

BUSINESSES

First National Bank
Scott Lane/Miner's Bluff Band
Hy-Vee in Mission
Wal-Mart Neighborhood Market in Westwood
Cinder Block Brewery
Williams Chili
Houlihan's in Fairway
Nail Perfection & Spa in Mission
Westport Yoga
Jeff Driver, Farmers' Insurance Agent
Nadeem & Bethany Dallal, Complete Care Dentistry in Roeland Park

Did you know?

You must have a **permit** from the City for dumpsters and portable storage containers. The permit must be obtained before the container is delivered! The \$20 permit can be obtained at City Hall. A \$50 fee is applied if the permit is obtained after delivery of the container.



Council Actions September - November

APPROVED

Sept 19

- Kansas Family & Community Education Week Proclamation
- Diaper Need Awareness Week Proclamation
- Ordinance 931 Workshop Procedures
- Charter Ordinance 33
- Charter Ordinance 34

APPROVED

Oct 17

- Ardie Davis Proclamation

APPROVED

Nov 21

- R Park Wine Tasting Fundraiser
- Proclamation World Pancreatic Cancer Day
- Approval of Elevation of Commerce Bank Building
- Approval the Dedication of Public Land for the Izabel Heights Plat on Fontana
- Tobacco 21 Ordinance
- Ordinance 945 Update to the 2012 Comprehensive Plan

Agendas, packets and minutes for all City Council and Workshop meetings are available at www.roelandpark.net. The public is welcome to attend city meetings. If you need accommodations, please contact the City Clerk at 913-722-2600 (Kansas Relay Service 1-800-766-3777). Please give 48 hours' notice.

**Congratulations to
Bishop Miege's Football Team and Boys'
Soccer Team on their State
Championships!**

BISHOP MIEGE HIGH SCHOOL

Snow Season is Here

Our Public Works department is asking all residents to please park your vehicles in the driveway as we do our best to clear the roads. Vehicles in the street can cause obstructions to our snow removal efforts. The best snow removal is a collaborative effort between the residents and the City.

Thank you for your cooperation!



From the Desk of Mayor Joel Marquardt

4800 Roe "Old Pool Site"

Things are happening at the caves. Surely, between the time of this writing and the time it is received, the picture will no longer be current. The City decided to use accumulated TIF funds to remove the unstable cave ceilings to make the property usable on both the upper and lower levels. We are grateful for the forethought our previous governing bodies have had in enacting the TIF initially. Without it there is little likelihood of being able to

use the cave area for development. As you may recall, the city has signed letters of intent with a hotel developer for the upper area and a zip-line provider for the lower, less visible portion. The development consultant preliminary plans also reserved space on the Roe side for a couple of restaurants and/or retail sites.



4800 Roe "Old Pool Site"

NW Roe and Johnson Drive

Commerce Bank and the Small Hospital have approvals from the City to build their projects. They only have to complete construction drawings and attain building permits to get started with construction. We understand that they intend to start construction the first quarter of 2017. The site plan reserves space at the SE corner of the site (by the intersection) for the required 1% for art as part of their construction costs. The Governing Body will approve how those funds are to be spent. Under consideration is having the design enhance our City's south gateway at Roe and Johnson, and possibly tie-in with another element just across Roe at the Johnson Drive intersection.

NE Roe and Johnson

About one third of the property closest to Johnson Drive is in the City of Mission and owned by the State of Kansas since it was part of the old cloverleaf interchange. After much review, we finally have approval for the City of Roeland Park to purchase the land. With this in hand and the recent full break access at the northwestern corner of the site, we feel this is now a very attractive site to developers. The Development Committee has reviewed citizen input and is in the process of working with our development consultant, CBC, to determine how best to proceed. Currently we are looking at a two-story mixed use building, but no decisions have been made.

Walmart

We understand that Walmart is planning to put money into our existing store for some much needed upgrades, and not move to the Mission Gateway site. Obviously this is temporarily good for our budget. Seeing that they have not asked to expand on our site, we don't know if this is just a short term maintenance fix, or if they truly intend to stay. For perspective, we know they requested almost 100,000 square feet of additional store area in one Mission concept, with the last iteration being about 50,000 square feet more. Even if they wanted to expand in place, they would have to attain approval from our Planning Commission and Governing Body to do so.

47th & Mission

The owner of Joe's Kansas City has purchased this vacant corner lot. He has said that he intends to start construction on a restaurant on this site within the next few months. Parking on the site has been approved only through 4/1/17. If construction hasn't started by May 1, 2017, the owner must return the site to grass.

As a recap, the 47th and Mission, the Walmart and now the NW Roe and Johnson sites are not owned by the City, so there is less control on these areas than the others. Seeing that, we are all working towards the best development we can reasonably expect on each site for all of us, and not just something that will fill each site. Here's to positive next steps in 2017. Cheers...and Happy New Year!

A handwritten signature in black ink, appearing to read "Joel".

Snow Removal Operations



According to the results from our citizen survey, our snow removal efforts scored a 86% satisfaction rating. Compared to the KC Metro average of 46%, Roeland Park Public Works provides outstanding services to the citizens of Roeland Park. To maintain our level of service and improve communication, Public Works has included their priority route map on the back page of this newsletter. This map illustrates the priority levels for each street when we plow snow. Streets are prioritized according to the following classifications, from highest to lowest priority: Arterial Streets, Collector Streets, Secondary Collector Streets, and Residential Streets. These priority levels consider traffic volumes, emergency vehicles, school buses, and school traffic in our City. Please park your vehicles off-street when you see snow in the forecast. Thank you for your help!

2016 Street Maintenance Overview

In 2016, the City of Roeland Park began surface treating our streets. The surface treatment we used is known as granite chip seal. The process we use for this has six basic steps:

- We identify streets that are considered in fair condition, these streets can be returned to good condition through surface treatment.
- Public Works crews locate the bad asphalt areas on these fair condition streets.
- Bad asphalt areas are removed and replaced. This is why you may have noticed asphalt patches on our roads recently.
- Crews come back the following spring and crack seal the patches. The crack seal is a thin strip of tar which seals the patches.
- The street is now ready to have one uniform coat placed over it and we schedule the street for granite chip seal.
- The granite chip seal is placed, returning the street to a good condition.

Why do we use this approach? The cost to perform chip seal is nearly 1/6 the cost to 2" mill and overlay a street, and nearly 1/15 the cost to completely reconstruct our streets. We are able to maintain and improve the condition of our streets more cost effectively with this surface treatment approach. For more information on this topic, you may reference the 2016 Street Maintenance Overview on the November 7, 2016 Council Workshop agenda which our Director of Public Works, Jose Leon, has provided (<http://roelandpark.novusagenda.com/AgendaPublic/>).

Kansas City has a new consolidated public transport system! For more information visit
www.ridekc.org

RideKC 

Sidewalk Inspection Program



We want a safe and walkable community, so it is necessary to identify infrastructure shortcomings. The Public

Works Department is initiating a sidewalk inspection program to find hazards in the sidewalks within public right-of-way. These hazards can range from sidewalk settlement to cracking and deterioration of the concrete. This winter you will see Public Works staff walking around the City with a tablet performing these sidewalk inspections which will assist the City in locating and identifying sidewalk hazards. The information will serve as the basis for our sidewalk maintenance program.

CITY ELECTIONS COME BUT ONCE EVERY TWO YEARS

If you haven't gotten your fill of election news yet, there are some changes to the local election schedule for Roeland Park's City Council according to Charter Ordinance No. 32. The next general election for Council positions will take place on Tuesday, November 7th 2017. Newly elected Councilmembers will take office in January 2018. The terms of current Councilmembers, set to expire in April 2017, will instead expire in January 2018. Likewise, the terms of Councilmembers set to expire in April 2019 will expire on January 2020 when the officials elected from the November 2019 office will take office. Elections are held every two years for expiring Council seats and the term length for Council positions is four years.

**Is Your Pet
Licensed?**

All dogs and cats over 6 months of age must be licensed annually and immunized against rabies. For more information, contact City Hall.
913-722-2600

UPCOMING EVENTS

January 2, City Offices are closed to observe New Years Day

January 16, City Offices are closed to observe Martin Luther King, Jr. Day

February 4, **This event has been cancelled.** Lovey Dovey Art Mart, 1pm to 4 pm at Roeland Park Community Center

March 25, Spring Wine Fling to raise funds for R Park Shelter, 7pm to 10pm at the Roeland Park Community Center

April 15, Easter Egg Hunt, 11 am at Nall Park

April 29, Arbor Day Celebration , 11 am at R Park

May 4-7, City-Wide Garage Sale

VOLUNTEER OPPORTUNITIES

Roeland Park currently has 6 active committees: Arts, Events, Parks, Sustainability, Planning Commission, Board of Zoning Appeals. Most positions are filled by the December meeting for the following year. Even though Planning and Zoning Appeals have their maximums filled, the other 4 have not. Please consider getting involved in a committee of your choice, and have fun getting to know others in our neighborhoods with the same interests. They mostly involve about one 1-hour meeting a month. Feel free to come and just sit in on a meeting, then complete the Committee Volunteers Application which you can obtain at City Hall or on the website at www.roelandpark.net. If you have any questions about serving, please call City Hall at 913.722.2600.



Ways to Stay in Touch with what's going on in
your City and your Neighborhood

City of Roland Park Website www.roelandpark.net

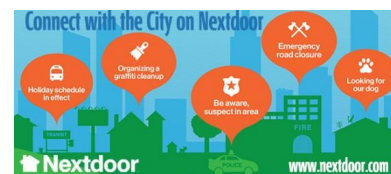
City of Roeland Park Facebook Page: <https://www.facebook.com/search/top/?q=city%20of%20roeland%20park%20ks>

Next Door <https://nextdoor.com/city/roeland-park-ks/>

Twitter <https://twitter.com/roelandparkks>

Constant Contact - call or sign up at the City website to receive emails from Constant Contact about City announcements and events

Calendar of Events & Meetings <http://www.roelandpark.net/explore-roeland-park/event-calendar/>



Notify JoCo

www.notifyjoco.org

Constant Contact

*Have a Happy and
Safe New Year!*

Roeland Park Community Center

(913) 826-3160

Office Hours

Monday-Thursday: 8am - 8pm

Friday: 8am - 5pm

Fitness Room

Monday-Thursday: 7am-8pm

Friday: 7am - 6pm

Saturday: 8am - 12pm

Sunday: Closed

Room Rental Hours

Monday-Thursday: 8am - 10pm

Friday-Saturday: 8am - 10:30pm

Sunday: 11am - 8pm

Roeland Park Aquatic Center

(913) 432-1377

Pool hours subject to change for outdoor season

Please Note Revised Hours

Lap Swim Hours

Monday-Thursday: 6am - 1:30pm



JOHNSON COUNTY
Park & Recreation
District

What do you do for fun?

As a resident of Roeland Park check out this great perk, right in your own backyard! Single fitness room memberships start at just \$37 for 3 months and families can join for as little as \$46 for three months! Not ready to commit to a membership? Day passes are just \$4/day! Stop in and see us!

Fitness Room Corporate Memberships Available!

Increase Productivity, Improve Morale & Reduce Stress for your Employees

New! Photo Sharing & Editing (50 Plus): Thursday, January 26th, 5:30-8:30 p.m., \$25 per person

The memory card is full on your digital camera, smart phone, or tablet with pictures from vacation and family parties. What now? Take this class to learn how to transfer, organize, share, and print photos. The instructor will also cover basic editing skills and savvy photo additions like borders and text. Please bring devices and chargers to class.

Becoming a Babysitter (Ages 12-16): One day course, Friday January 27th, February 3rd or March 10th, 8:00 a.m.-4:00 p.m., \$80 per person. Babysitting requires a lot of responsibility and preparation. Attend this class to learn how to become a babysitter. The class covers: personal safety, job expectations, easy cooking, appropriate activities for different ages, and how to diaper and feed babies. Participants will practice what to do in emergency situations and become First Aid and CPR certified. A babysitting manual and lunch will be provided. If you have a group of six and would like a private class, call Lisa at (913) 826-3161 to schedule.

Valentine's Day Dinner and Bingo (50 Plus): Saturday, February 11th, 5:00-7:30 p.m., \$15 per person. Avoid the crowded restaurants and celebrate Valentine's Day with an evening at the Roeland Park Community Center. Enjoy a dinner catered especially for you followed by 12 games of bingo. Bingo winners will be awarded prizes ranging from gift bags to gift certificates.

Magician and Clown Training (Ages 8-15): Three sessions starting Friday, February 10th, 6:00-8:00 p.m. or Tuesday, March 14th, 2:00-4:00 p.m., \$70 per person. Pick a card, any card! Learn from a real magician and clown how to preform sleight of hand tricks, juggle, dressing the part and, stage presence. Take home kits included! The February class will run three consecutive Friday evenings. The March class will run Tuesday, Wednesday, and Thursday the week of March 14.

New! Spring Break Engineering FUNDamentals using LEGO® (Ages 7-12): Monday-Friday, March 13-17th, 8:00 a.m.-5:00 p.m., \$250 per person. LEGO® lovers will spend spring break powering up their engineering skills with Play-Well TEKologies and tens of thousands of LEGO®! Morning activities will include LEGO® themed cooking, art projects, and group games. In the afternoon, participants apply real-world concepts in physics, engineering, and architecture through engineer-designed projects such as arch bridges, skyscrapers, motorized cars, and the Battletrack! An experienced instructor will challenge all students to engineer at the next level. Please bring a lunch and water bottle each day.

For more information, a complete list of all our available programs or to register for activities please call (913) 826-3160 or visit us online at www.jcprd.com.

Roeland Park Aquatic Center

Programming News—Swim lessons resume and **New** Aqua Jogging and Pool Instead of School activities kick off 2017!

Hours and Closing Notifications – Please see left sidebar for revised pool hours and note the facility will be closed on January 1st and 2nd for the New Year's Holiday. In addition, due to the replacement of the sites heat exchange unit pool staff is asking patrons to call before coming to the facility during the month of January. Pool closure will be necessary to complete the installation process.

City of Roeland Park
 4600 W 51st Street
 Roeland Park, Kansas 66205
www.roelandpark.org

City Administrator
 Keith Moody
 (913) 722-2600
kmoody@roelandpark.org

Finance Officer/Asst. City Administrator
 Jennifer Jones-Lacy
jjoneslacy@roelandpark.org
 (913) 722-2600

City Clerk
 Kelley Bohon
 (913) 722-2600
kbohon@roelandpark.org

Police Department
 Chief of Police, John Morris
 (913) 677-3363
emorris@roelandpark.org

Public Works Department
 Jose Leon
 (913) 722-2600
jleon@roelandpark.org

Mayor—Joel Marquardt
jmarquardt@roelandpark.org
 (913) 362-5222

Ward 1—Becky Fast
blfast@msn.com
 (913) 722-2600

Ward 1—Sheri McNeil
Smcneil@roelandpark.org
 (913) 362-3491

Ward 2—Michael Rhoades
 (913) 788-1181
Rhoades.Roeland.Park@gmail.com

Ward 2—Tim Janssen
tjanssen@roelandpark.org
 (913) 214-6785

Ward 3—Erin Thompson
erinthompsonforrp@gmail.com
 (913) 667-9159

Ward 3—Ryan Kellerman
rkellermanward3@gmail.com
 (913) 667-0118

Ward 4—Teresa Kelly
teresakellyrp4@gmail.com
 (913) 961-9826

Ward 4—Michael Poppa
mpoppa@roelandpark.org
 (913) 890-3809

