



AUGUST/SEPTEMBER 2022

THE ROELAND PARKER

Official Newsletter of the City of Roeland Park

Letter from the Mayor

Dear Residents,

August marks one of the most important dates in a City's annual calendar – the adoption of the next fiscal year's budget. We are proud to propose a one mill reduction while maintaining excellent levels of service and investing in capital infrastructure.

I encourage all residents to review the City's proposed 2023 budget and engage with the process by contacting your elected officials or through public comment at an upcoming council meeting. Our budget is a reflection of our community values and we appreciate your input.

Sincerely,

Mike Kelly



This issue:

Letter from the Mayor
PAGE 1

Capital Projects Update
PAGE 2

2023 Budget
PAGE 3

Arts Committee
PAGE 3

Invasive Species Guide
PAGE 4

Community Center Events
PAGE 5

Sustainability Initiatives
PAGE 6

City Contacts
PAGE 7

City Hall Space for Rent
PAGE 8

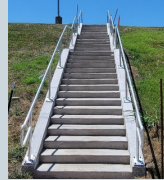
Community Center Parking Lot

Improvements at the Roeland Park Community Center were completed in June 2022. The project consisted of installing new storm sewer pipe & structures to improve drainage within the parking lot, curb & gutter replacement, ADA improvements along sidewalks and addition of new handrail. Mill & overlay of the entire parking lot area, and new striping and signage. The parking lot was reconfigured to allow for 2-way traffic. The total design and construction cost was nearly \$1 million.



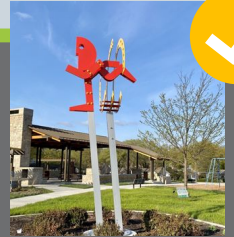
Aldi Stairs

The staircase was installed in the late spring of 2022. This project was a council objective that would provide a pedestrian connection point from Roe Lane to the businesses along Roe Blvd. Artistic elements will be incorporated into the stair surface beginning on July 15th, 2022.



R Park Phase 3

The final phase of the improvements for R Park are scheduled to begin in August. The project scope will include replacing the limestone walking trail with concrete, updated play structures, addition of a green traffic garden that will include signage, pavement markings, and intersections that children can learn fundamentals of bike riding, safety. Kansas Heavy Construction is the general contractor for the project. The estimated completion of the project is late October 2022.



Cedar Street Sidewalk

A new sidewalk was added on the westside of Cedar St between Sycamore Dr & Rosewood Dr. The sidewalk was listed as a high priority sidewalk in the city's pedestrian & bike infrastructure plan. The project included adding 1,044 S.F. of 5' sidewalk, replacement of drive approaches, new ADA sidewalk ramps. Total cost for this project was \$92,230.



Johnson Drive Joint Project

Roeland Park is partnering with Mission on a construction project along Johnson Dr from Roe Blvd to Lamar Ave. The project includes spot curb/sidewalk replacement, UBAS surface treatment, addition of a new sidewalk on the northside from just west of the hospital to the western city limits. Drive entrances to the Roeland Park businesses along Johnson Dr will need to be replaced to provide adequate grading slopes as the sidewalk runs through the approaches. McAnany Construction is the general contractor for the project. Construction activities for Roeland Park's portion of the project will begin July 18th. The concrete elements will be completed by August 1st followed by the UBAS surface treatment on August 8th. Project completion date is estimated to be August 22nd.



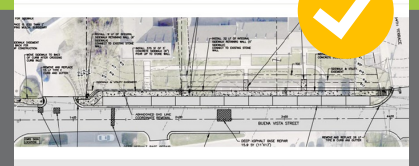
Elledge Drive - Roe Lane to 47th

Elledge Dr is currently under construction. The selected contractor for the project is Phillips Paving Inc. The project will include the replacement of stormwater pipes & structures, spot curb and sidewalk replacement, mill & overlay of the street, raised crosswalk near Parish Dr, and the addition of striped bike lanes on both sides of the street. The city received funding to pay for a portion of construction and inspection costs through the Johnson County CARS program which assists cities in completing large capital projects. The total cost of the project is \$1,230,400 and Johnson County will reimburse the city in the amount of \$620,000. The city also received \$151,000 from a Community Development Block Grant. The construction timeline for completion of the project is anticipated to be in late September/early October of 2022.



Buena Vista and 53rd Street

The construction project for Buena Vista from 53rd St to Shawnee Mission Parkway & 53rd St from Buena Vista to Mission Rd will begin in early August of 2022. Roeland Park will be partnering with Fairway on the improvements. The project will include the addition of new sidewalk on the westside of Buena Vista from 54th Terr to SMPKWY and will wrap around to connect to the existing sidewalk on 55th St. A new sidewalk will be added on the eastside of Buena Vista from 54th Terr to 53rd St. Drive approaches will be replaced along the northside of 53rd St to meet ADA compliance standards. A mill & overlay of the street surface along with new pavement markings. Kansas Heavy Construction will be the general contractor and the estimated completion of the project is 6 weeks, weather permitting.





Late July: Notices of Intent to Exceed Revenue Neutral Rate Public Hearings sent by the County
August 22: Budget Public Hearings and Adoption at City Hall, 6 pm or Zoom

BUDGET AT A GLANCE

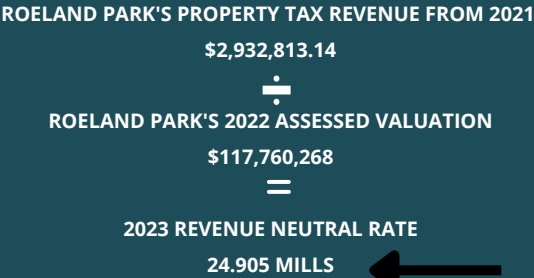
- proposed **1 mill reduction** for a mill rate of 27.547
- proposed budget objectives include the addition of a license plate reader for the Police Department, a new artistic play structure for R Park, renovated women's locker rooms at the Aquatic Center, and funding for greater public engagement in the budget process
- over \$25,000 dedicated to citizen assistance programs such as Neighbors Helping Neighbors and the Property Tax Rebate Program
- over \$3 million of capital infrastructure improvements, including a Community Center renovation and reconstruction of Canterbury Street.

PROPOSED 2023 MILL RATE



WHAT IS REVENUE NEUTRAL?

- Revenue neutral means that a taxing jurisdiction budgets the exact same amount of property tax dollars for a current year as they received in the previous year.
- Example: if a City budgets the use of \$1 million in property tax revenue in 2022, they would be required to budget the use of \$1 million in 2023 as well.**
- The revenue neutral rate is the mill levy that would bring in the same amount of property tax dollars for a current year as was received in the previous year.



For more information about revenue neutral and the City's budget:



ARTS COMMITTEE UPDATES

BY MARY SCHULTEIS

The Roeland Park Arts Advisory committee is pleased to announce the purchase of a heart from the Parade of Hearts. The title of the heart is "Growing Peace, Love and Harmony in KC" and was painted by artist Cindy Heller. The profits of the sale will benefit area organizations including MARC, Visit KC and the University of Kansas Health System.

The Arts Advisory Committee will be working with the Parks committee to decide on a location for the heart. Keep an eye out for this beautiful addition to our amazing city.



Roeland Park has a new addition of an artistic bench. It is located across from the beautiful mural painted by local artists on Roe Lane and 47th street. The bench is by world renowned artist Jorge Blanco. Please drive by and see it or sit down and enjoy the local artist's mural.

A huge thanks to the Parks Committee, Public Works, and especially Donnie Scharff and Daniel Vandebos for helping us with this project.





How to Remove Invasive Bush Honeysuckle and Wintercreeper From Your Yard

BY GRETCHEN DAVIS, PHOTOS BY MISSOURI INVASIVE PLANT COUNCIL

What do we mean by "invasive" plants? They are aggressive, non-native species which cause or are likely to cause economic harm, environmental harm, or harm to human health.

Codes in Roeland Park prohibit specific invasive plant species on private and public property. The City is working on eradicating two invasive plant species in Cooper Creek Park which have gotten a strong foothold over many decades, choking out native plants. including many trees. The thick and entrenched growth of these invasives made it impossible for the City to remove them all by hand. Habitat Architects, a professional, environmentally-sound company, was hired to cut down and/or treat with herbicide the wintercreeper groundcover and vines, bush honeysuckle, 7 Callery Pear trees, and a Tree of Heaven.

The following information, some of which is from the Missouri Invasive Plant Council (MoIP), will help Roeland Park homeowners identify two common invasive plants, bush honeysuckle and wintercreeper, that could be growing in your yard.

Suggestions on how to eradicate bush honeysuckle and wintercreeper from your yard can be found in this expanded article posted on the City's website, following this link: <https://tinyurl.com/2p8cxtpx>.

Invasive Bush Honeysuckle

Bush honeysuckle is a large, upright, multi-stemmed, and spreading shrub reaching up to 20 feet in height, with flowers that change from white to yellow; red berries; and leaves that green up much earlier than the surrounding native vegetation. In late autumn, leaves remain green and attached well after the leaves of our native trees and shrubs have fallen.

Because bush honeysuckle forms a dense understory, it limits the amount of sunlight reaching native plant seedlings, inhibiting their growth. It competes with native plants for moisture and nutrients in the soil. Bush honeysuckle is also allelopathic, which means it produces a chemical that inhibits the germination and growth of other plants. Bush honeysuckle spreads from the roots, allowing it to further dominate an area.



Invasive Wintercreeper

Wintercreeper (*Euonymus fortunei*) is an evergreen perennial vine, native to China, Japan, and Korea, that was introduced as an ornamental groundcover. Leaves are glossy, dark green, oval, slightly toothed, with light-colored veins, about 1-2.5 in. long. Flowers are small and greenish and occur in clusters. Fruits are rounded and smooth in an orange capsule, maturing from September through November. Wintercreeper is an aggressive evergreen vine that grows across the ground, eliminating native plants and seedlings. It climbs fences, walls, and trees, reaching as high as 70 feet into the tree canopy by clinging to the bark, eventually killing the tree. It can tolerate most growing conditions.

Cooper
Creek
Park
Restoration
Project

For more information about the Cooper Creek Restoration Project,
contact: Anthony Marshall
amarshall@roelandpark.org

The Roeland Park Recreation Campus

COMMUNITY CENTER

Fitness Room
Personal Trainers
Group Fitness Classes
Facility Rental Space
Early Childhood Center
Programs & Events For All-Ages

Monday-Thursday: 7 am-8 pm

Friday: 8 am-5 pm

Saturday: 8 am-1 pm

Sunday: Closed

NOW ACCEPTING:



*Active Fit & Silver Fit
Coming Soon*

SPORTS DOME

Adult Volleyball Leagues
Adult Basketball Leagues
Court Rentals Available

*Please call for open gym
and court rental availability.*

VISIT JCPRD.COM



Community Center (913) 826-3160
Sports Dome (913) 362-8700

SUSTAINABILITY INITIATIVES

The Go Green 2022! Environmental Fair Brings Sustainability to Your Doorstep

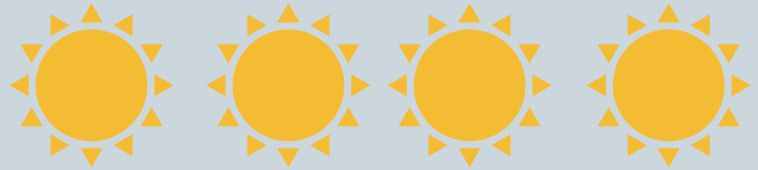


You're invited to come learn more about how being green can save green through energy efficiencies, local products and more!

The City of Roeland Park- with neighboring cities in Northeast Johnson County - is hosting Go Green 2022! on Saturday, September 17th from 9 a.m. – noon at the Powell Community Center in Mission. This free, family-friendly environmental fair will show how each small step you take can help reduce your carbon footprint at home, school and work and save money in the process.

Go Green 2022! will include vendors, children's activities, door prizes, giveaways and entertainment. For more information, check out our website at www.mission.org/gogreen.

SOLAR PANEL PRODUCTION



In 2021 the City installed solar panels on City Hall, the Community Center and the Aquatics Center. These panels generate clean energy while saving the City money. Below is an update on the performance of the panels to date:

	CO2 Emissions Saved (in lbs)	MWh* generated	Equivalent Trees Planted
City Hall	199,666	128	1,507
Community Center	119,827	77	905
Aquatic Center	139,954	90	1,057

*megawatt hour (Mwh) equals 1,000 kilowatts of electricity generated per hour

City Contacts

Q Search



City Administrator - Keith Moody
kmoody@roelandpark.org

Finance Director/Asst. City Administrator- Erin Winn
Ewinn@roelandpark.org

City Clerk- Kelley Nielsen
knielsen@roelandpark.org

Chief of Police- John Morris
Emorris@roelandpark.org

Director of Public Works - Donnie Scharff
Dscharff@roelandpark.org

Mayor- Mike Kelly
Mkelly@roelandpark.org
(913) 722-2600

Ward 1 - Jan Faidley
jfaidley@roelandpark.org
(913) 709-6812

Ward 1 - Tom Madigan
tomrpk@gmail.com
(913) 526-6997

Ward 2 - Jen Hill
jhill@roelandpark.org
(913) 722-2600

Ward 2 - Benjamin Dickens
bdickens@roelandpark.org
(913) 544-1259

Ward 3 - Trisha Brauer
tbrauer@roelandpark.org
(913) 722-2600

Ward 3 - Kate Raglow
kraglow@roelandpark.org
(913) 722-2600

Ward 4 - Michael Poppa
mpoppa@roelandpark.org
(913) 722-2600

Ward 4 - Michael Rebne
mrebne@roelandpark.org
(913) 228-2650



CITY HALL OFFICE SPACE FOR RENT!



Scan the code to learn more!



ROELAND PARKER



ROELAND PARK CITY HALL OFFICE SUITE
4600 W. 51st Street, Roeland Park, Kansas



LEASE RATE: \$17.75/SF FSG | 2,129 SF SPACE AVAILABLE

Interested? Contact:

Daniel Brocato
816.412.7303
dbrocato@blockandco.com

Evan Stone
816.412.7324
estone@blockandco.com

PAGE 8