

DECEMBER 2022/JANUARY 2023

THE ROELAND PARKER

Official Newsletter of the City of Roeland Park

Letter from the Mayor

Dear Neighbors and Friends,

It has been an honor to be your Mayor for the past five years. The success that we've achieved didn't happen by accident - it came about through the dedication, vision, and hard work of our residents, our staff, and our elected officials working together.

I'm proud of our accomplishments and the sense of community and welcoming we've established.

We've made investments in our physical infrastructure that will last for generations. We reshaped Roe Boulevard, R Park, and our Aquatic Center, as well as dozens of streets and sidewalks. Frankly, we rebranded our city.

And we lived our values, leading the metro area in doing our part to protect the environment, and ensuring that no matter where you came from, to whom you pray, or who you love, you have a place in Roeland Park.

We've been through a lot together. We weathered a once-in-a-lifetime pandemic, and we did our part to make sure our community was healthy, our businesses stayed open, and our students remained in school. No plan is perfect - especially one you have to create on the fly - and I appreciate people's passionate advocacy during the trying times. What never left during the pandemic, and what I take with me as I go, is the Roeland Park spirit. We are uniquely rooted to this community, and to one another.

I am resigning my position, but I am not going far. I'm still your neighbor, and my role as County Chairman will allow me to share our Roeland Park spirit with all of our neighbors throughout Johnson County. Please continue to contact me with your questions, concerns, and ideas. Thank you for the opportunity to serve. I'll see you at the Park.

With Gratitude,

Mayor Mike Kelly



This issue:

Letter from the Mayor
PAGE 1

Playground and Art Exhibit
PAGE 2

Holiday Giving
PAGE 3

Sustainability Spotlight
PAGE 4

Sustainability Spotlight
PAGE 5

Community Center
PAGE 6

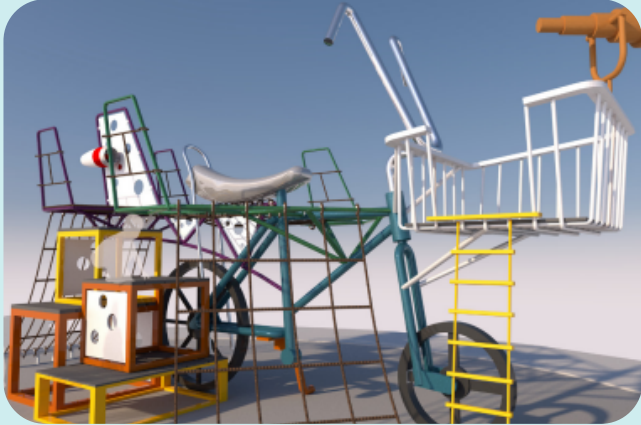
In Remembrance
PAGE 7

City Contacts
PAGE 7

Odor Complaints & New Art
PAGE 8

R Park's "Mighty Bike Project"

THANK YOU TO OUR RECENT DONORS!



INDIVIDUALS

Dr. George & Kay Postma
Lee & Kelli Cho Davis
Lili & Chris Shank
Dolores & Stephen Schroff
Linus Orth Memorial Fund
Scott Lerner Memorial Fund
Laura Savidge
Gretchen and Ardie Davis

BUSINESSES

MJH Insurance
KS Gas Service
Ripple Glass
Paul Dorell, Leopold Gallery
Dr. Mark Woody, DDS,
Corinth Dentistry

GROUPS

Parks Committee
Sustainability Committee
Citizens Fundraising Initiative for R Park

New Art Exhibit at City Hall

Featured artist **Suzann Geringer** presents *"Blossoms in Winter"* at the George R. Schlegel Gallery, an exhibition of her paintings, drawings, and prints. Included will be large flower-themed oil and acrylic paintings as well as drawings, acrylic sketches and prints on paper.

For Suzann, flowers have a certain mystique that compels her. Her challenge is to convey that lush magic and satisfaction to the viewer. She finds influence in the works of Henri Matisse and Paul Gauguin as well as from the flattened patterning and distorted perspective of Medieval church art.

Please visit the *"Blossoms in Winter"* exhibition through January 7, 2023. George Schlegel Gallery, Roeland Park City Hall, 4600 W. 51st Street, second floor, Roeland Park, KS 66205.





COMMUNITY GIVING

This holiday season, there are many ways to bring joy and give to others. Check out ways to participate in community giving with Roeland Park!

HOLIDAY FOOD DONATIONS

Please drop off any nonperishable food items to City Hall or to the Community Center through December 16th. Consider items like pasta, rice, canned soups, canned chicken and tuna, cooking oils like olive, dried spices, whole grain cereals, and granola bars. For donating financially throughout the season, you can visit roelandparkumc.org/give-online and select 'hunger relief'.



HOLIDAY KINDNESS PROJECT

It's back again this year! Residents can participate by purchasing gift cards to local businesses around \$10–20 apiece, or donating cash via Venmo. Roeland Park Police officers will distribute the gift cards throughout the season when they encounter residents in need. Check out www.roelandpark.org for full details.

HOLIDAY FAMILY ADOPTION

The City is adopting Roeland Park families this year to provide them with needed items. If you would like to help or donate to a family, please contact Kelley Nielsen at knielsen@roelandpark.org for more information regarding needed items



Sustainability Spotlight

The Roeland Park Sustainability Committee sends a huge THANK YOU! to all the citizens who take the time to help keep Roeland Park free of litter. You may think that no one notices your efforts, but we do! Your efforts keep Roeland Park a desirable place to live, give our community a sense of civic pride, and raise community awareness that litter is unacceptable.

What is littering?

Littering is the improper disposal of waste products. It's a relatively modern problem that began with the increased production of disposable products and packaging. Littering can happen intentionally or unintentionally, but both have environmental consequences. Researchers found that the most littered items include cigarette butts, food wrappers, single-use plastic water bottles, disposable cups, grocery bags, straws, beverage cans, tire and vehicle debris.

Littering leads to soil, water, and air pollution.

As litter degrades, chemicals and microparticles are released. Cigarette butts, the most littered item in the world, can take up to 10 years to decompose, and contain hundreds of toxic chemicals, including formaldehyde, arsenic, and lead. These poisons can make their way into the soil and freshwater sources, impacting both humans and animals. Sixty percent of water pollution is attributed to litter.



Litter kills wildlife.

Trash that's left out and not disposed of properly can look like food to hungry animals. Millions of animals die each year after ingesting, or becoming entangled in, improperly discarded trash.

Litter can draw unwanted pests.

Rainwater collecting in discarded items serves as a mosquito breeding ground. Mosquitoes can spread several diseases including malaria and West Nile virus. Food wrappers and drink containers can attract pests, such as rats and cockroaches.

Litter is a fire hazard.

Discarded cigarette butts that have not been fully extinguished can start a grass or trash fire.

Litter is costly to the economy.

Litter is unsightly and makes the community an uninviting place to live. Littered areas are often associated with crime and lower property values, discouraging economic development. Litter also costs money to clean up, reducing resources that could be used to improve the community in other ways.

Sustainability Spotlight



Why Do People Litter?

About 20% of litter on land comes from unsecured items in the back of trucks or trash receptacles, but the vast majority of litter originates intentionally. Over 75% of litter on roadways comes from motorists and pedestrians. Deliberately throwing a cup out a window or dropping food packaging on the ground can have far-reaching effects. So why do people intentionally litter? The justification generally boils down to one of four reasons: laziness or carelessness; lack of access to trash receptacles; lenient law enforcement; and presence of litter already in the area.

How you can help:

- Recycle: You can recycle items such as cans, bottles, and paper in appropriate bins. A number of public trash recycling receptacles are available in Roeland Park, including at R Park and Cooper Creek Park. Ripple Glass's bulk glass recycling bin is located in the Roeland Park Aldi parking lot, and citywide curbside glass recycling will soon be available.
- Reuse: Use reusable bags and containers instead of disposable ones. Urban Prairie Coffee in Mission offers a discount on coffee for customers who bring reusable mugs.
- Reduce: Buy products that generate less waste. Carry a refillable water bottle to help reduce the number of plastic bottles in circulation. Buy food in bulk rather than in individually wrapped containers.
- Dispose of your own trash in appropriate bins: Litter is preventable. Clean up after yourself and throw away your own trash. Keep a bag in your car to hold trash until you are at home or able to dispose of it properly. Leave every place you visit cleaner than you found it. Include children in cleaning up after a picnic or game.
- Educate Others: Talk to family and friends about the effects of littering, and encourage them to be responsible.
- Support Laws: Contact your local representatives and let them know that you support measures to reduce litter in your community. Together, we can make a difference.
- Additional solutions for both citizens and cities: Increase the number of public trash receptacles. Proactively organize or attend citywide cleanups. For health and safety reasons, be sure to use caution when picking up litter. Consider using a grabber tool and gloves. Alert the proper authorities if you encounter dangerous litter such as broken glass, needles, or other hazardous waste.

In conclusion:

By keeping an eye on the ground, snapping up candy wrappers, plastic six-pack rings, wads of tissue, and all the other trash that's been left behind, residents can help keep their neighborhoods litter free. During your walk to the park or the store, picking up a few pieces of litter might seem inconsequential, but that small action makes a tangible difference and can inspire others to view their environment a little differently.

You've done a good thing. We see you. We appreciate you. WE THANK YOU!

~ The Roeland Park Sustainability Committee

The Roeland Park Recreation Campus

COMMUNITY CENTER

Please excuse our mess during the remodel of our building. The fitness room is still available at this time. To find out details about all other activities, please go to our website or give us a call.



SPORTS DOME

Adult Volleyball Leagues
Adult Basketball Leagues
Court Rentals Available

*Please call for open gym
and court rental availability.*

SUMMER CAMP IS COMING!

***Online registration begins at
6AM on Monday, January 23rd.***

*You can preview upcoming
camps on Friday, January 23rd
at JCPRD.COM*



Community Center (913) 826-3160
Sports Dome (913) 362-8700

Remembering Paula Gleason

Paula Gleason was an active and dedicated member of the City's planning commission, serving as vice-chair and chair during her tenure. We know her to be tenacious, inquisitive, and a fierce advocate. She was a valuable member of the commission, and proud to serve her community and call Roeland Park home.



City Contacts

 Search

City Administrator - Keith Moody
kmoody@roelandpark.org

Finance Director/Asst. City Administrator- Erin Winn
Ewinn@roelandpark.org

City Clerk- Kelley Nielsen
knielsen@roelandpark.org

Chief of Police- John Morris
Emorris@roelandpark.org

Director of Public Works - Donnie Scharff
Dscharff@roelandpark.org

Mayor- Mike Kelly
Mkelly@roelandpark.org
(913) 722-2600

Ward 1 - Jan Faidley
jfaidley@roelandpark.org
(913) 709-6812

Ward 1 - Tom Madigan
tomrpks@gmail.com
(913) 526-6997

Ward 2 - Jen Hill
jhill@roelandpark.org
(913) 722-2600

Ward 2 - Benjamin Dickens
bdickens@roelandpark.org
(913) 544-1259

Ward 3 - Trisha Brauer
tbrauer@roelandpark.org
(913) 722-2600

Ward 3 - Kate Raglow
kraglow@roelandpark.org
(913) 722-2600

Ward 4 - Michael Poppa
mpoppa@roelandpark.org
(913) 722-2600

Ward 4 - Michael Rebne
mrebne@roelandpark.org
(913) 228-2650





Noticing an odor?

If you're experiencing a smell from the Nelson Wastewater Treatment plant, you can call 913-715-8600 or visit <https://www.jocogov.org/departments/wastewater/residential-customers/report-sewer-problem> to report it to Johnson County

ROELAND PARKER



Yellow Bench by Jorge Blanco, across from the mural on 47th St