



# The ROELAND PARKER

February—March 2018

Dear Neighbors,

## Mayor's Report

As we welcome the New Year and its opportunities for renewal and reflection, I am happy to have the opportunity to share a brief letter of thanks with you. Thank you for your kindness -- not only to me but to my family as we met with you at your doorstep last year. It was truly remarkable to hear everyone's passion and ideas to make Roeland Park the best community possible. Please know that I rely upon your direction as we work to progress the city forward.

Thank you also for your trust. While compared to some I am relatively new to Roeland Park, I fully understand the weight of the obligations and expectations that have been placed upon my shoulders. I do not take them lightly. Rest assured that I will work each and every day on behalf of you and your families, and I will make decisions with our shared interests in mind.



As I stated last fall, Roeland Park is turning the page to a bright chapter in its storied history. We are growing in the number of new residents, property values, parks, and commercial assets. I am excited for the new bank and hospital to open on the northwest corner of Johnson Drive and Roe Boulevard. Additionally, while I'm not a master cyclist, I look forward to taking a ride on our new Nall Park bike trail this spring. I hope these new community assets whets our collective appetites for additional development. You've told me that you want sit-down restaurants, coffee shops, local retail, and entertainment opportunities for your families. You expressed a passion for our parks and green spaces, and for adding shaded spaces and sanitation options to them. At the same time, you expressed concern of the recent tear-down trend and new, larger homes being built that may jeopardize the character of our neighborhoods. Your thoughts have been heard loud and clear. I look forward to working with the Council to tackle these issues, and others, in the coming year.

However, as I've told you, the Governing Body cannot do anything alone. We rely upon the voice, the talents, and the collective will of our citizens to accomplish our shared goals. Therefore, I hope that you are ready to work with us and help usher in a prosperous, exciting time for Roeland Park. Please know that my inbox, and my door, are open to your suggestions. I look forward to working with you, and I wish you a happy, healthy New Year.

With Roeland Park Pride,  
Mike Kelly

### Utility Assistance Available to Roeland Parkers in Need

It's getting **COLD** out there! The City of Roeland Park participates in the Johnson County Utility Assistance Program which provides assistance to Johnson County residents who meet income guidelines. Nobody should have to go without heat or water this winter. If you or a neighbor need assistance with utility bills, please contact (913) 715-6653 to complete an application and set up an appointment.

### In This Issue

- Volunteers Needed
- Meet the Newly Elected Officials
- City Legislative Update
- RPAC Update
- Trash Service News
- Community Center
- Public Works Projects

# Public Works Update

## R Park Tennis Courts

The City has selected a contractor to reconstruct the tennis courts in R Park. The first bidding process yielded one bid. This time around, the City received four bids with much more competitive prices. Staff selected and Council approved McConnell and Associates who was the low bidder at \$143,857.50. The City is also seeking \$32,000 in grants from USTA and the Missouri Valley Regional USTA to complete the work. The demolition work will be completed by Public Works staff, saving the City additional money on the project. Work on the new tennis courts is planned for spring 2018.

## Dead Tree Removal at Nail Park

The City Council adopted a 2018 Budget Objective to remove several dead trees in and around Nail Park. With the construction of the multi-use trail complete, more residents are flocking to the park and we want to keep the park looking as nice as possible. This effort will take place throughout the winter months with plans to be completed by April.



## Public Works Maintaining Vegetated Stormwater Ditches

Public Works staff has begun maintaining the vegetated storm water ditches installed as part of the RC 12-014 and RC 12-012 storm water projects. Public Works is removing honey suckle and volunteer trees that have grown in these ditches since their installation. This is a lot of work and we apologize for any inconvenience our efforts cause. The maintenance ensures the drainage ways retain their designed capacities and prevents over shading which leads to erosion problems.

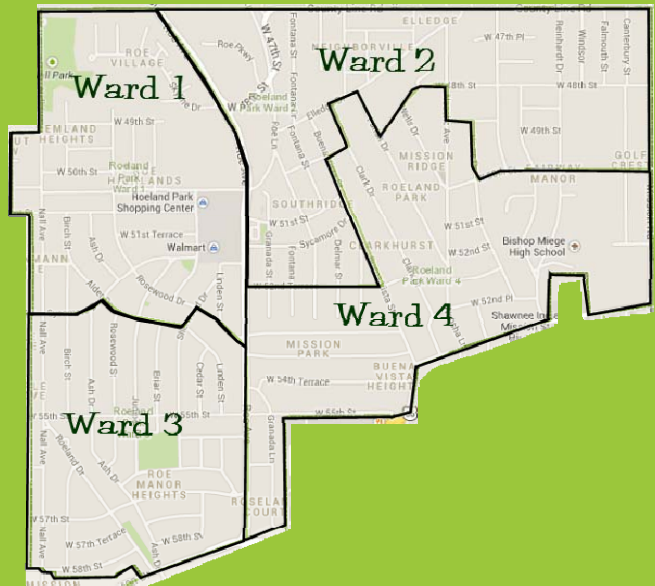
## Arbor Day 2018

Arbor Day in Roeland Park is always the last Friday of April which is April 27, 2018. As we plan for Arbor Day events, please be on the lookout for information regarding Arbor Day activities via the City's website and social media.



Roeland Park currently has six active committees: Arts, Events, Parks, Sustainability, Planning Commission, Board of Zoning Appeals. **We particularly are in need of volunteers for the Planning Commission (Ward 1), BZA and the Events Committee.** No experience is required, however, Planning Commission and BZA would benefit from anyone who is an engineer, real estate agent, attorney, contractor or has experience with development.

Please consider getting involved in a committee of your choice, and have fun getting to know others in our neighborhood with the same interests. Time commitments are minimal for normal business meetings. Feel free to come and sit in on a meeting, then complete the Committee Volunteers Application which you can obtain at City Hall or on the website at [www.roelandpark.net](http://www.roelandpark.net). If you have any questions about serving, please call City Hall at 913.722.2600.



# City Legislative Update

## New Legislation for In-Home Daycares

On November 20, 2017, the City Council approved Ordinance 961 which now allows for in-home daycares within the City limits to have more than three children in their care up to the state maximum. The legislation also includes additional requirements for those businesses. Any resident wishing to run an in-home daycare with more than three children at one time must apply through the Special Use permitting process which is approved by the City Planning Commission. All in-home daycares must:

- Have State licensure and provide a copy to the City
- Obtain a City business license
- Maintain at least 100 square feet of open space per child with a solid or semi-solid fence or wall between six and eight feet high
- Provide a place where at least two vehicles can pickup/drop off
- Provide landlord consent, if in a rental property
- Apply and obtain a special use permit from the Planning Commission

Special Use permits require notification of neighbors within 200 feet of the home and are good for five years from the date of issuance. For more information on the process or any questions on requirements, please contact John Jacobson at [jjacobson@roelandpark.org](mailto:jjacobson@roelandpark.org) or Jennifer Jones-Lacy at [jjoneslacy@roelandpark.org](mailto:jjoneslacy@roelandpark.org), or call 913-722-2600 to speak with either.



## Solar Panel Installation

Installation of solar panels are becoming more affordable and can provide an alternate energy source for your home. If you are considering a solar panel project please know that City Code states that a solar energy system or solar collection device construction requires an application and permission from the City Council. Please contact City Hall at 913-722-2600 to file an application.

## Snow and Ice—Clean and Safe Sidewalks

Winter is here and that brings snow and ice to our City. The property owner and/or the occupants are responsible to remove all snow and ice from their sidewalks within 48 hours of a storm. In addition to shoveling, you may also sprinkle sand, ash, or other noncorrosive materials.



## Insurance Requirements for Dangerous Animals

The City Council approved Ordinance 959 on November 20th which changes the insurance requirement for keeping a dangerous animal. A dangerous animal is any animal which has 1) caused a bite injury, other than a bite that resulted in great bodily harm, disfigurement or death to any person; or 2) killed another domestic animal. There are exceptions if the bite was sustained by a member of the household, while committing a crime or abusing the animal, or if the animal was protecting or defending a person from an unjustified assault or attack. If an owner chooses to keep a dangerous dog, they are required to have a liability insurance policy between \$50,000 and \$500,000. The amount is determined by the municipal court judge based on the severity of the incident.



## Additional City Council Actions

- Ordinance 958 - Strengthens enforcement action with trees and shrubs overhanging streets and sidewalks and allows for City abatement and assessment to property taxes. For repeat offenders, the City can opt to continuously abate the property without further notice after the first notice is given in a year.
- Ordinance 960 - Eliminate the Redevelopment Committee as part of the redevelopment process.
- Approved the Roe Boulevard engineering services contract for construction of the facility.
- Approved underground stormwater detention at The Rocks development.
- Approved the design task order for 2018 Birch Street and Sidewalk Addition project.
- Renewed the Ad Hoc Development Committee and appointed new members.

## THANK YOU R PARK DONORS!

### INDIVIDUALS

Stephen & Delores Schroff  
Janet & Todd Zimmer  
Sarah Krause  
Carol Fields & Chuck Downing  
Kevin White  
Emily & Kyle Roger

### BUSINESSES

State Farm Agent David Chavez in Roeland Park  
Commerce Bank in Roeland Park  
Houlihan's in Fairway  
Russell Stover in Fairway



## Major Business Donations to R Park Shelter Fundraising Campaign in 2017

Grateful thanks to the following local businesses who made major donations to the 2017 R Park Shelter Citizens Fundraising Campaign. When you patronize these businesses, please thank them for their community-minded gifts which will benefit R Park and in turn all of us:

- Commerce Bank** in Roeland Park - \$2,500
- US Bank** in Roeland Park - \$1,600 sponsorship of Kids' Soccer Clinic Fundraiser for R Park
- WCA Waste Corporation** - \$1,000
- Dr. Ryan Nadolski, Health Source Sport + Spine** in Mission - \$500 Sponsorship of Kids' Soccer Clinic Fundraiser for R Park
- China Star** in Roeland Park - \$400-
- State Farm Agent David Chavez** in Roeland Park - \$400

Citizens Fundraising Initiative for R Park also gratefully acknowledges more than 50 other business and individual donors who contributed to the R Park Community Picnic Shelter Fundraiser during 2017. Citizens Fundraising has currently raised nearly \$40,000 out of their \$50,000 goal which will be applied toward the City's cost of building a much-needed community picnic and shade shelter in R Park.

We would appreciate your help by joining with us in raising the final \$10,000 by sending a tax-deductible donation to Roeland Park City Hall, 4600 W. 51<sup>st</sup> Street. The check should be made payable to "Roeland Park Community Foundation," Memo on the check: "R Park Shelter Donation". We applaud your community spirit, and we will gratefully acknowledge your gift. Working together, citizens, businesses and the City of Roeland Park have made a significant difference in the revitalization of R Park in the past 4 years.

Thank you!

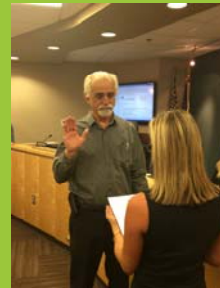
*Citizens Fundraising Initiative for R Park*

## Meet Your Newly Elected Officials

On January 8, 2018, four new council members and a new mayor were sworn in to office representing the City of Roeland Park. These newly elected officials bring a major change to the Governing Body as well as their own perspectives as Roeland Park citizens and now leaders of our community. We asked these newbies three questions:

- 1) How long have you been a Roeland Park resident?
- 2) What inspired you to run for office?
- 3) What is one thing you want Roeland Parkers to know about you.

Find their answers on the following page! Photos are by Tom Styrkowicz/53Tom.com



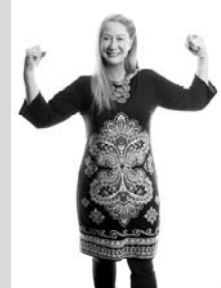


**Tom Madigan - Ward 1 . tomrpk@gmail.com**

- 1) 32+ years
- 2) After attending years of Council meetings and serving as the Board of Zoning Appeals chairperson, I decided that I could be a true voice for all the citizens of Roeland Park.
- 3) I am a firm believer that to achieve more citizen involvement, we must create a convenient system of communications between the residents, Governing Body and City Staff. Please feel free to contact me.

**Jen Hill - Ward 2 . jhill@roelandpark.org**

- 1) 5 years
- 2) The current state of our country inspired me to take action rather than just talk about it. A group of RP friends told me they thought I would make a great city councilor and asked me to consider running. While on a canoe trip with my boys, I quickly decided that running for city office was something I was meant to do and I was confident I could excel in the position.
- 3) It is my goal to inspire everyone to get involved in Roeland Park. I will not stop knocking on your doors. I want to help each person find what they love in our community. My door is always open. I will continue to host "Porch Talks" and welcome everyone to tell me what is important to you so that I can work to create the Roeland Park you



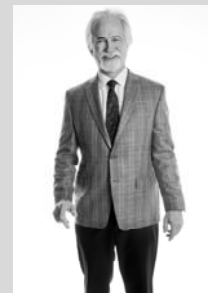
**Claudia McCormack - Ward 3 . cmccormack@roelandpark.org**



- 1) 10 years
- 2) I was inspired to run by the unprecedented political climate and divisive circumstances that have afflicted our nation. Our communities and our country deserve moderate, decisive, moral leaders who value the greater good of all people over political rhetoric and self-service.
- 3) I work as an Occupational Therapist in the field of Home Health. My work and my passion is to support individuals, communities and systems to be healthy, harmonious and self-sufficient. I know that my pragmatic ideals and experiences will optimally support our transitioning Roeland Park in the promising years ahead.

**Jim Kelly - Ward 4 . jkelly@roelandpark.org**

- 1) 8 years
- 2) I ran for City Council because I like to give back to the community in which I live. I have been a regular attendee at Council meetings and the Ad Hoc Redevelopment Committee. With my experience in project management, I know I can help the City move forward on economic development projects and other matters before the Council.
- 3) That I spent the past 14 years as a youth umpire/referee for baseball, fast pitch softball and volleyball.



**Mike Kelly - Mayor . mkelly@roelandpark.org**



- 1) 5 years
- 2) Having served on Sustainability Committee and the Community Foundation Board, I realized that a citizen can have a great impact on the lives of his family and neighbors and I felt I could do a lot of good for the community by serving as Roeland Park's Mayor.
- 3) I am a construction litigator by day and hope that my experience and knowledge of the industry can help the City's efforts toward new commercial development.

# Trash Talk - Bulky Item Collection



As of January 1, 2018, there is a change in the bulky/large item pick up service for residents of Roeland Park. Please read below to see the changes in the service and procedures for bulky item pick up. Please check out the [WCA](#) website for specific details of all services they provide to Roeland Park residents, as well as procedures for setting out your trash, yard waste and recycling.

## Bulky and Large Item Pick Up & White Goods

Up to two bulky/large items per month will be collected at Roeland Park households. Scheduled service for "no charge bulk service" is on your 1<sup>st</sup> and 3<sup>rd</sup> pick up day each month. Bulky items include: couches, chairs, dressers, mattresses, etc. Bulky item collection excludes appliances and electronics. **Construction materials will not be collected.**

For bulky item collection, a notification can be made by calling WCA at 816-380-5595 or submit a service request at [wcawaste.com/roeland-park](http://wcawaste.com/roeland-park). Arrangements must be made prior to your scheduled collection day so manpower assignments can be determined. Additional removal of bulky/large items exceeding 2 items per month may be arranged by contacting [WCA](#) to make arrangements.

Appliances can be collected for an additional fee by contacting WCA at 816-380-5595 or submitting a service request at [wcawaste.com/roeland-park](http://wcawaste.com/roeland-park). Non-freon containing white goods are charged a \$25.00 service fee billed to resident.



## Ways to *Stay in Touch* with what's going on in your City and your Neighborhood

[City of Roland Park Website](http://www.roelandpark.net) [www.roelandpark.net](http://www.roelandpark.net)

[City of Roeland Park Facebook Page:](https://www.facebook.com/CityofRoelandParkKS) <https://www.facebook.com/CityofRoelandParkKS>

[Next Door](https://nextdoor.com/city/roeland-park-ks/) <https://nextdoor.com/city/roeland-park-ks/>

[Twitter](https://twitter.com/roelandparkks) <https://twitter.com/roelandparkks>

**Constant Contact** - call or sign up at the City website to receive emails from Constant Contact about City announcements and events

[Calendar of Events & Meetings](http://www.roelandpark.net/explore-roeland-park/event-calendar/) <http://www.roelandpark.net/explore-roeland-park/event-calendar/>



NotifyJoCo

[www.notifyjoco.org](http://www.notifyjoco.org)

Kansas City has a new consolidated public transport system! For more information visit [www.ridekc.org](http://www.ridekc.org)

RideKC 

## "Bishop Miege High School State Champions Week"

January 29—February 2, 2018

**Bishop Miege's Award Winning Teams, Athletes & Scholars: Boys & Girls Basketball, Football, Girls & Boys Soccer, Girls Swim & Dive, and 2 & 4 Speaker Debate**



**Roeland Park Community  
Center**

(913) 826-3160

**Office Hours**

Monday-Thursday: 8am-8pm

Friday: 8am-5pm

**Fitness Room**

Monday-Thursday: 7am-8pm

Friday: 7am-6pm

Saturday: 8am-12pm

Sunday: Closed

**Room Rental Hours**

Monday-Thursday: 8am-10pm

Friday-Saturday: 8am-10:30pm

Sunday: 11am-8pm

**Roeland Park Aquatic Center**

# What do you do for fun?

## Check out all these great perks, right in your own backyard!

**Fitness Center** - Memberships are done in 3, 6 or 12 month increments with single memberships starting at just \$38. Families can join for as little as \$48 and anyone can enjoy a day pass for just \$4/day. Work near Roeland Park? Talk to your employer about our Fitness Room Corporate Memberships!

**Rentals** - Planning a holiday party, meeting, birthday party, or wedding reception? We have a variety of rooms available to meet your rental needs. Spaces can accommodate anywhere from 40-125 people and are an exceptional value for Roeland Park residents. Give us a call for more detailed information or to check availability. Remember, it's never too early to start thinking about graduation parties! Weekends in May book fast!

**Child Development Center** - A true hidden gem in Roeland Park offering full-time childcare options! Fully licensed by the State of Kansas and Five-Star rated with the KS Quality Rating and Improvement System. Our center can accommodate 22 children, ages 3-5. Children must be potty trained.

Space available! Call (913) 826-3170 for more information.

### Lovey-Dovey Art Mart (All Ages)

**Saturday, January 27th, 10:00am-1:00pm, FREE**

The Lovey-Dovey Art Mart is your one stop shop for the local and handmade of Kansas City! Artisans will feature unique Valentine's Day gift options for everyone on your list. Free cookie decorating, Valentine's Day crafts, photo booth, and a display of local artisans also included. Bring family and friends to this fun-loving event! If interested in being a vendor, contact Lisa at (913) 826-3161 or [lisa.scharnak@jocogov.org](mailto:lisa.scharnak@jocogov.org)

### Bingo - All Star (50 Plus)

**Thursday, January 25th, 1:30-3:30pm, \$5 / \$6 nonresidents**

BINGO! Delight in food, prizes, fun and 12 games of bingo. Variety of prizes awarded including gift certificates. Please pre-register by calling (913) 831-3359, payment is required at time of registration.

### New! Canning: Preserving Jams and Jellies (50 Plus)

**Monday, February 5th, 4pm-7:30pm, \$15**

Get hands-on in the kitchen using the water bath canning technique to preserve a jam or jelly. This class is presented at an intermediate skill level for those comfortable with cooking. Price includes a jar to take home of seasonal jam or jelly.

### New! Finish that Project! (Adults)

**Friday, February 23rd, 5pm-10pm, \$16**

Is it hard to find time at home to finish your sewing and craft projects? Bring your supplies and join us for pizza, socialization, and uninterrupted time to work. Teachers knowledgeable in sewing, crochet, knitting, and crafting are available to help if you run into a problem. Please register by 2/19.

### New! Cooking: Mexican Fiesta (Ages 8-13)

**Friday, February 24th, 10:30am-12:30pm, \$36**

Dive in for some fiesta favorites! Kids learn to cook with tasty and healthy ingredients. Basic cooking skills and kitchen responsibilities are covered.



**JOHNSON COUNTY**  
**Park & Recreation**  
**District**

For more information, a complete list of all our available programs or to register for activities please call (913) 826-3160 or visit us online at [www.jcprd.com](http://www.jcprd.com).



4600 W 51st Street  
Roeland Park, Kansas 66205

www.roelandpark.org  
(913)722-2600

City Administrator  
Keith Moody  
kmoody@roelandpark.org

Finance Director/Asst. City  
Administrator  
Jennifer Jones-Lacy  
jjoneslacy@roelandpark.org

City Clerk  
Kelley Bohon  
kbohon@roelandpark.org

Police Department  
Chief of Police, John Morris  
emorris@roelandpark.org

Public Works Department  
Director, Jose Leon  
jleon@roelandpark.org

Mayor—Mike Kelly  
mkelly@roelandpark.org  
(913) 722-2600

Ward 1—Becky Fast  
blfast@msn.com  
(913) 722-2600

Ward 1—Tom Madigan  
tomrpk@gmail.com  
(913) 526-6997

Ward 2—Jen Hill  
jhill@roelandpark.org  
(913) 722-2600

Ward 2— Tim Janssen  
tjanssen@roelandpark.org  
(913) 214-6785

Ward 3— Erin Thompson  
erinthompsonforrp@gmail.com  
(913) 667-9159

Ward 3—Claudia McCormack  
cmccormack@roelandpark.org  
(913) 722-2600

Ward 4—Jim Kelly  
jkelly@roelandpark.org  
(913) 722-2600

Ward 4— Michael Poppa  
mpoppa@roelandpark.org  
(913) 890-3809

## The Deal with the Roeland Park Aquatics Center

The Roeland Park Aquatics Center (RPAC) dome and indoor lighting was damaged during a wind storm in November 2017. This damage meant an end to the indoor pool season. Johnson County Parks and Recreation voted to replace the dome by making a claim to their insurance plan at no cost to the City. We hope to have the dome up and ready for the indoor season by the fall of 2018.

The City has an agreement with JCPRD that splits all operating losses and capital expenses 50/50 between the County and the City. That agreement ends at the end of May 2019, at which point, the City will be responsible for all losses and future capital expenses. JCPRD has offered to continue to operate the facility for an annual management fee estimated currently at \$400,000 per year. This aligns with the current operating loss the facility experiences on an annual basis.

Council voted to hire a consultant to review the potential future of RPAC and help the City determine whether the facility should continue year-round or become a summer only facility.



## Please Join Us for the Second ROELAND PARK BUSINESS NETWORK BREAKFAST

Wed, Feb 21 | 7:30 AM | US Bank  
4970 Roe Blvd, Roeland Park, KS



Enjoy free breakfast and coffee and learn more about the planned upgrades to Roe Boulevard and the Roe 2020 Project.

Presented by the  
City of Roeland Park  
& US Bank

RSVP to Jennifer Jones-Lacy by Mon.  
2.19.2018, jjoneslacy@roelandpark.org or  
call 913.722.2600