

***TYPICAL
LONG TERM
ROELAND PARK
RESIDENTS***

(With apologies to those who are not shown)



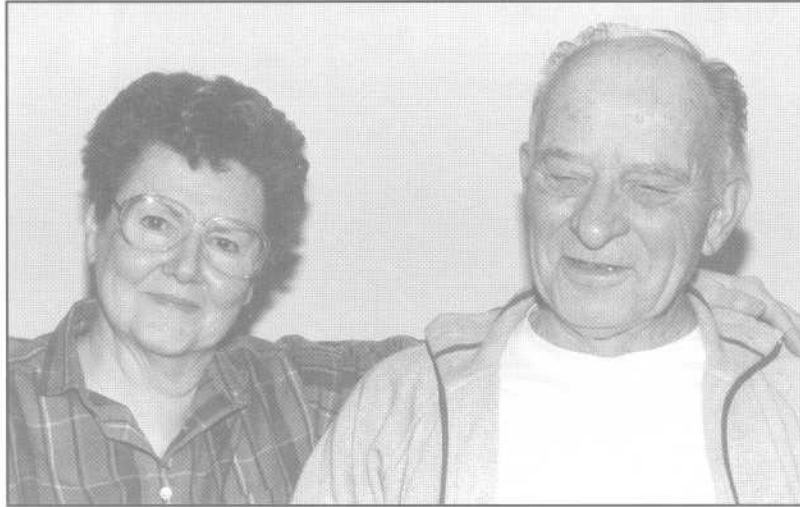
Mr. Carl Johnson

A resident since 1921, and a member of the Roeland Park Historical Committee



Mr. James Sappenfield

A resident since 1940, and a member of the Roeland Park Historical Committee



Mr. and Mrs. William J. Nunnink

Mrs. Nunnink's mother, a member of the Schleicher family, lived in a Shawnee Indian Mission building prior to the Mission being acquired by the State of Kansas



Mr and Mrs. William Johns

Residents of Roeland Park since 1958. Mr. Johns is a member of the Roeland Park Historical Committee.



Judge and Mrs. Francis L. Smith

Judge Smith served as Municipal Judge from 1959 to 1993.



Mr. John L. Sullivan
Chairman, Mercantile Bank



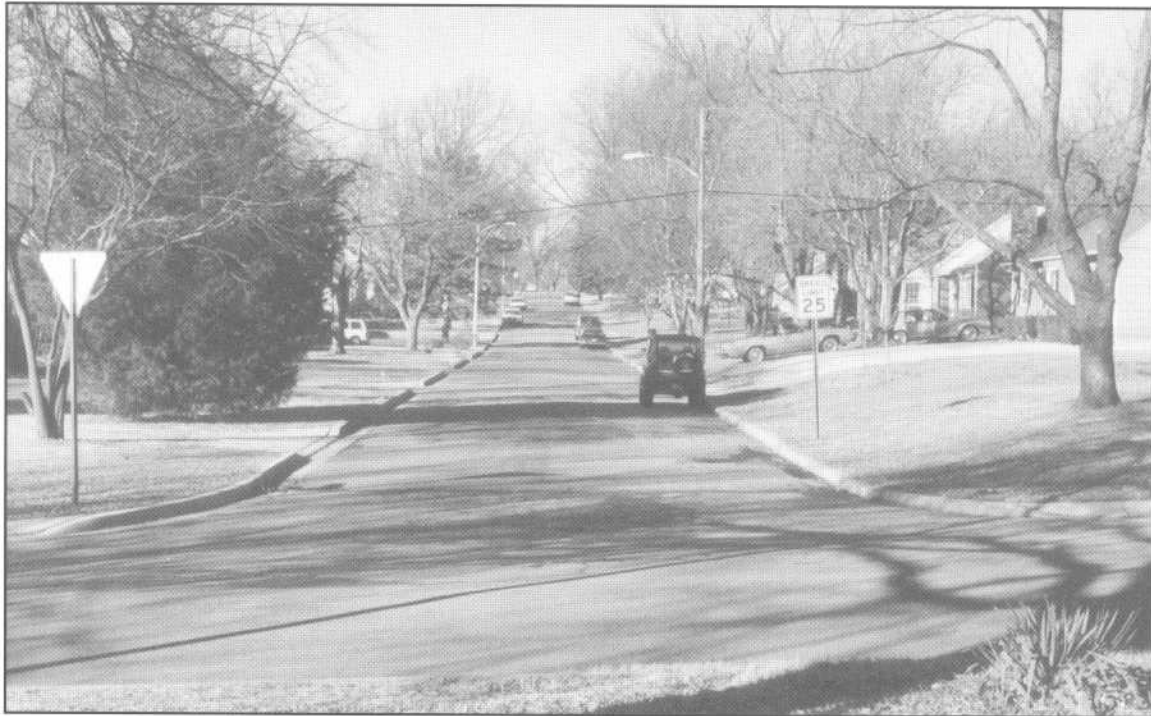
Mr. and Mrs. Robert Wendel

Mayor Wendel, and her husband, are long term residents of the City of Roeland Park. Both have been active in the City government and it's activities



West 50th Street in 1951

Looking west, from Rosewood Drive, as Charles Lee Hoskins rides his new Christmas bicycle



West 50th Street in 1996

Looking west from Rosewood Drive



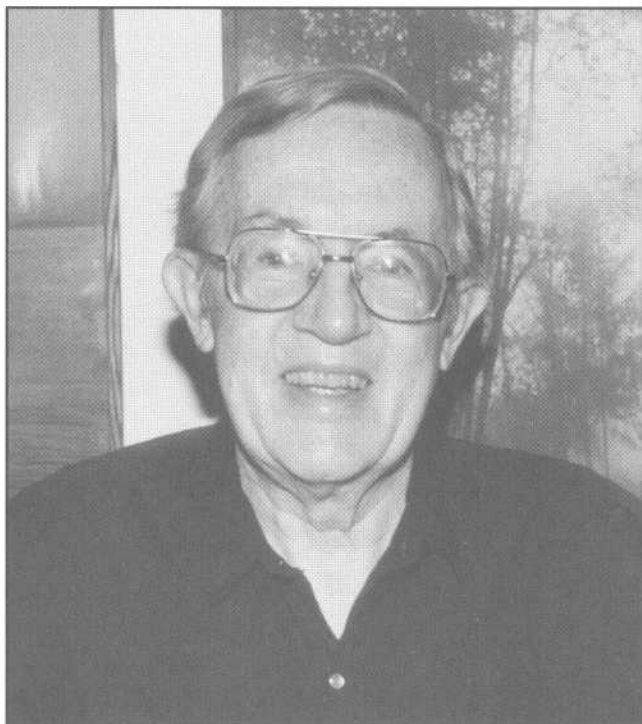
Mrs. Patterson's Day Nursery - 1949

Mrs. Patterson and Mrs. Neal operated a day nursery at 50th and Nall Avenue



Mrs. Patterson's Day Nursery - 1949

Mrs. Patterson is by the window and Mrs. Neal is sitting in the chair with her arm around "Bobby." Bobby was a "downs syndrome" boy who boarded with the ladies



Bill Johns

A member of the Roeland Park Historical Committee and a resident of Roeland Park since 1958

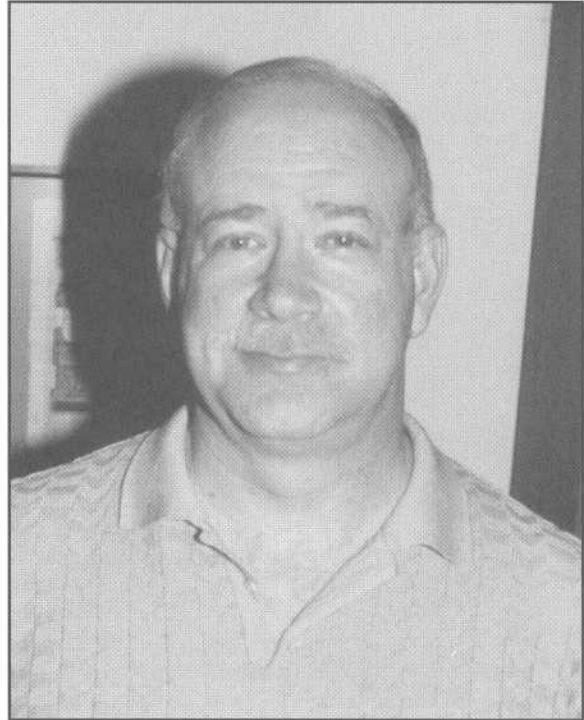
Mrs. Mary Ventura

A member of the Roeland Park Historical Committee. Mrs. Ventura is the present owner of the Teslar House, believed to be the oldest home in the City of Roeland Park.



Ben Silk

A member of the Roeland Park Historical Committee. Mr. Silk has lived in the area since he was a small boy



John R. Scott

A Roeland Park resident since 1948, a member of the Historical Committee and the author of this history

EPILOGUE

Forty-five years after its incorporation, the City of Roeland Park has matured. Council members are experienced. Adequate municipal office and recreational facilities are mostly available. The infrastructure is basically intact and includes some recently installed streets and storm sewers. Business has been solicited. Schools are adequate for the resident's needs. Police protection has proved effective. Residents have generally maintained the integrity of their homes and other property.

What does the future hold?

This question was posed to Mayor Joan Wendel and others. They have strong views on what is and what will be. To begin with, Mayor Wendel feels that the perception that the City of Roeland Park is a "blue collar" area is incorrect. Homes are smaller than in some other parts of Johnson County, Kansas and, indeed, some other parts of the Metropolitan Kansas City area. But these homes are occupied by young families, retired couples, individual owners. The residents represent a cross section of the area, not just one class of people.

What will be required as the City moves toward the year 2,000 and beyond. At some time in the near future some type of consolidation between cities may occur. This does not mean the merger of two or more cities into one. Rather, cities will cooperate through sharing, both physically and economically.

This cooperation is already occurring where storm water improvements are coordinated with street improvements. Johnson County now provides assistance for the storm water phase, while street resurfacing, and curb and gutter replacement is an obligation of the City. Yet both benefit since costs common to both projects are shared.

Mayor Wendel indicates that growth in the City's business community can be expected. This will include occupation of facilities by the Wal Mart Stores and tenants for other unoccupied facilities. Others are exploring the idea of restaurants on Roe as well as stores and office space in the site to be known as the Roe Market Place. However, the Mayor does not expect Roe to become commercial all the way to Johnson Drive. Mayor Wendel feels that the Mission Road and the Johnson Drive commercial areas, inside the City, will be upgraded.

Looking to the future, development of recreational facilities is expected to be enhanced. Typical examples will include the construction of the approved, new, swimming pool; possible restoration of the Alban Roe Park; a park with facilities for senior citizens; and possibly additional neighborhood parks as space becomes available.

Maintaining the integrity of the residential portions of the City of Roeland Park is essential. Because many of the homes contain only two and three bedrooms, there is a strong market for the homes. Values have held steady or increased. No longer is there a wide discrepancy between Roeland Park homes and similar sized homes in other communities. The Mayor believes the City is following the proper course in code enforcement to eliminate marginal and badly maintained properties in the City.

Looking to the future, the City of Roeland Park is, and will continue to be, a great place to live.