

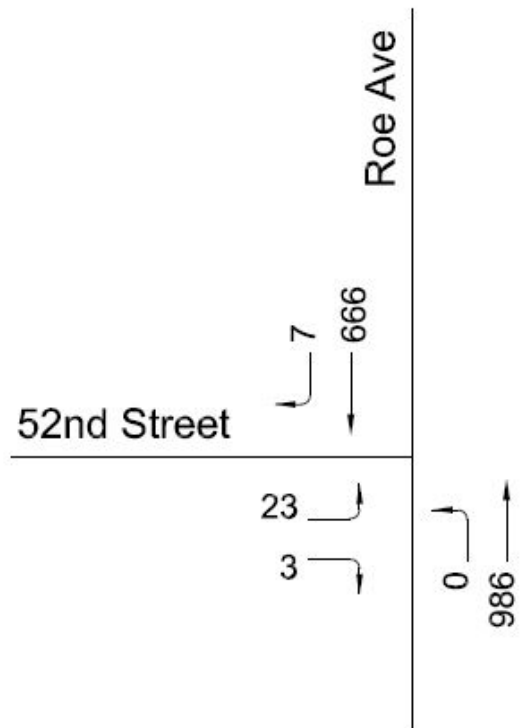
52nd Street & Roe Avenue Traffic Signal Evaluations

Roeland Park, Kansas

December 19, 2018

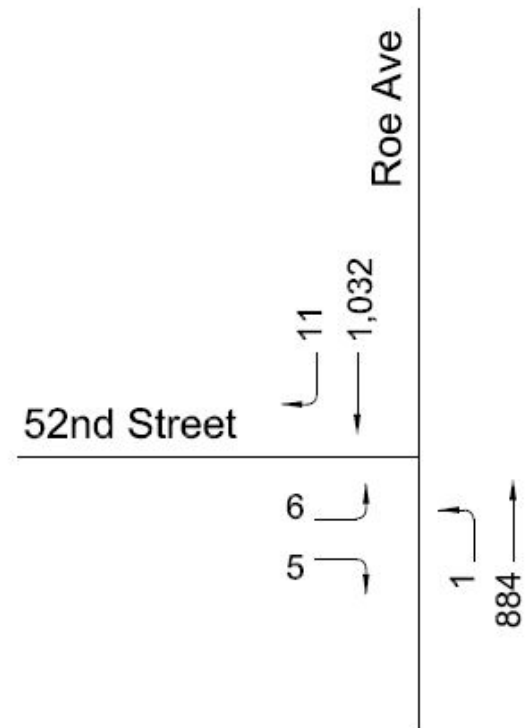
July 2016 Counts by Shafer, Kline & Warren

*A.M. Peak Hour
(7:30-8:30 a.m.)*



(1,659 vph / 26 vph)

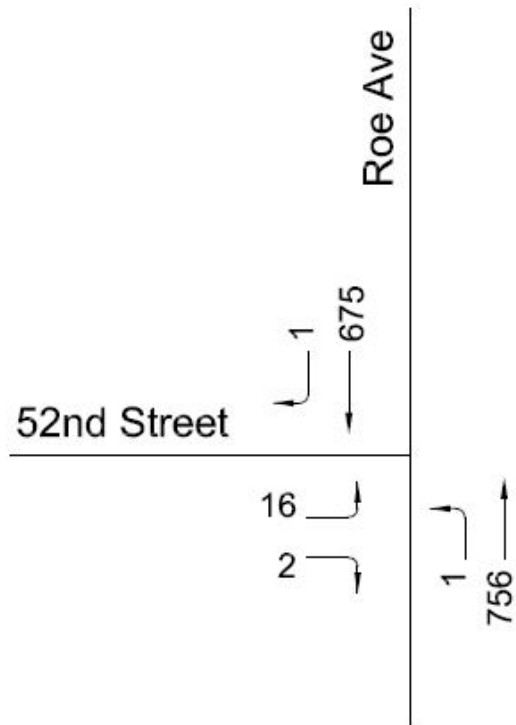
*P.M. Peak Hour
(4:45-5:45 p.m.)*



(1,928 vph / 11 vph)

November 2018 Counts by GBA

*A.M. Peak Hour
(7:30-8:30 a.m.)*



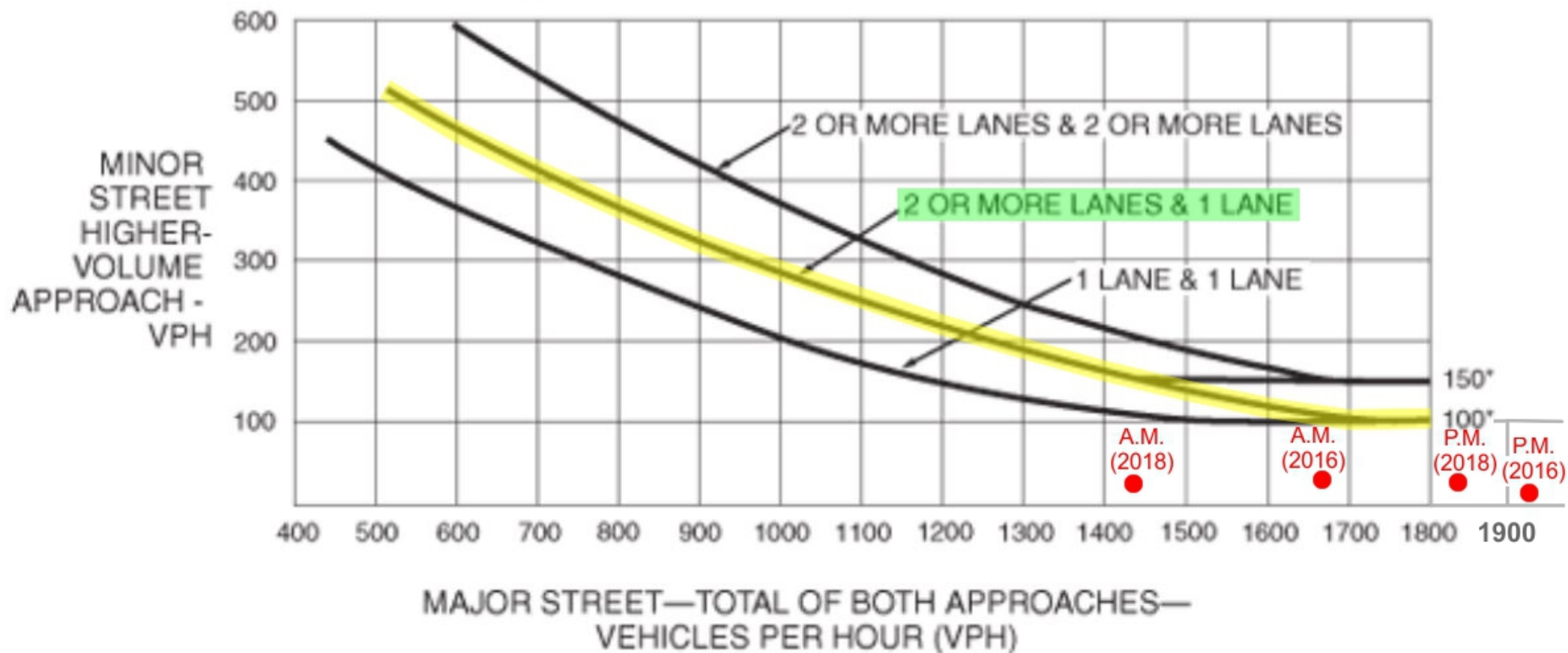
(1,433 vph / 18 vph)

*P.M. Peak Hour
(4:45-5:45 p.m.)*



(1,827 vph / 23 vph)

Figure 4C-3. Warrant 3, Peak Hour



*Note: 150 vph applies as the lower threshold volume for a minor-street approach with two or more lanes and 100 vph applies as the lower threshold volume for a minor-street approach with one lane.

