

2021 NEIGHBORHOOD STREET RECONSTRUCTION PROGRAM REINHARDT DRIVE (PAWNEE TO 48TH)

NEIGHBORHOOD MEETING

May 19, 2021 5:30-6:30 PM



AGENDA



LAMP
RYNEARSON

- Introductions
- Scope of Work
- Construction Schedule
- Received Questions
- Questions? Special Accommodations?



DONNIE SCHARFF
PUBLIC WORKS DIRECTOR
ROELAND PARK



DAN MCGHEE
PROJECT MANAGER
LAMP RYNEARSON



KEVIN BRUEMMER
CONSTRUCTION OBSERVER
LAMP RYNEARSON

MATT GRIPKA
PROJECT MANAGER
KANSAS HEAVY
CONSTRUCTION

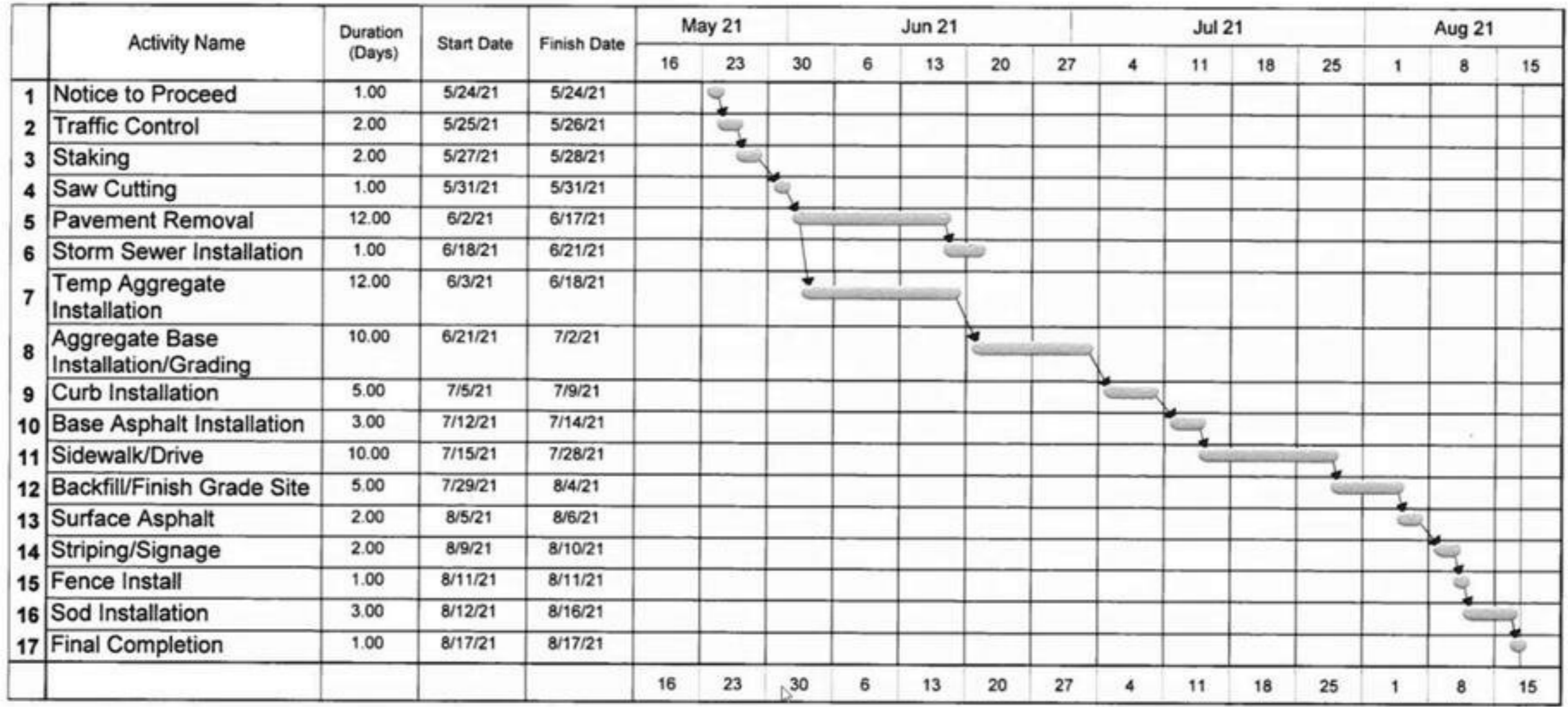
KENT MARSH
SUPERINTENDENT
KANSAS HEAVY
CONSTRUCTION



SCOPE OF WORK

- Remove and Replace curb and gutter between Pawnee Dr. to 50th St.
- Replace sidewalk on east side from Pawnee Dr. to 50th St.
- New 5-foot sidewalk on East side of Reinhardt Dr between 50th St. and New Horizon's
- Full reconstruction of street base & surface between Pawnee Dr. to 50th St.
- Minor Storm Sewer Replacement
- Pavement replacement from 50th St to 48th St.
- Replacement of some driveway approaches







RECEIVED QUESTIONS

- Will the Contractor start on the south end of Reinhardt and work north? **Yes, but in one phase. All of the pavement on the project will be removed within 2 weeks. Temporary aggregate installation will follow all pavement removal for daily access to properties.**
- Will one of entrances to Bishop Miega on Reinhardt Dr be accessible at all times during construction? **Yes. Reinhardt Dr will have temporary aggregate until later in July.**
- Will signage be in place to direct vehicles to use Mission Rd to access W 51st? **Directional detour signage for Bishop Miega traffic had not been considered, but could be provided. We can coordinate on the specific wording and signage locations.**
- Access on Reinhardt will be available during the construction, but intermittent delay could be expected? **Yes**
- Will the contractor provide contact information to the schools and residents if questions/concerns arise? **Kent Marsh, Superintendent, (913) 406-8783, kent.marsh@kshvycon.com. Matt Gripka, Project Manager, (913) 416-0034, matt.gripka@kshvycon.com**
- When the street is excavated, the temp aggregate will follow right behind pavement removal? **Yes**

THANK YOU

QUESTIONS? SPECIAL ACCOMMODATIONS?

If you have questions after this meeting please submit to Donnie Scharff, Director of Public Works at the following email - dscharff@roelandpark.org