



## HOW TO USE THE PUBLIC VIEW MAP OF TREE INVENTORY DATA

ROELAND PARK, KS

MARCH 2023



# How to Use the Map

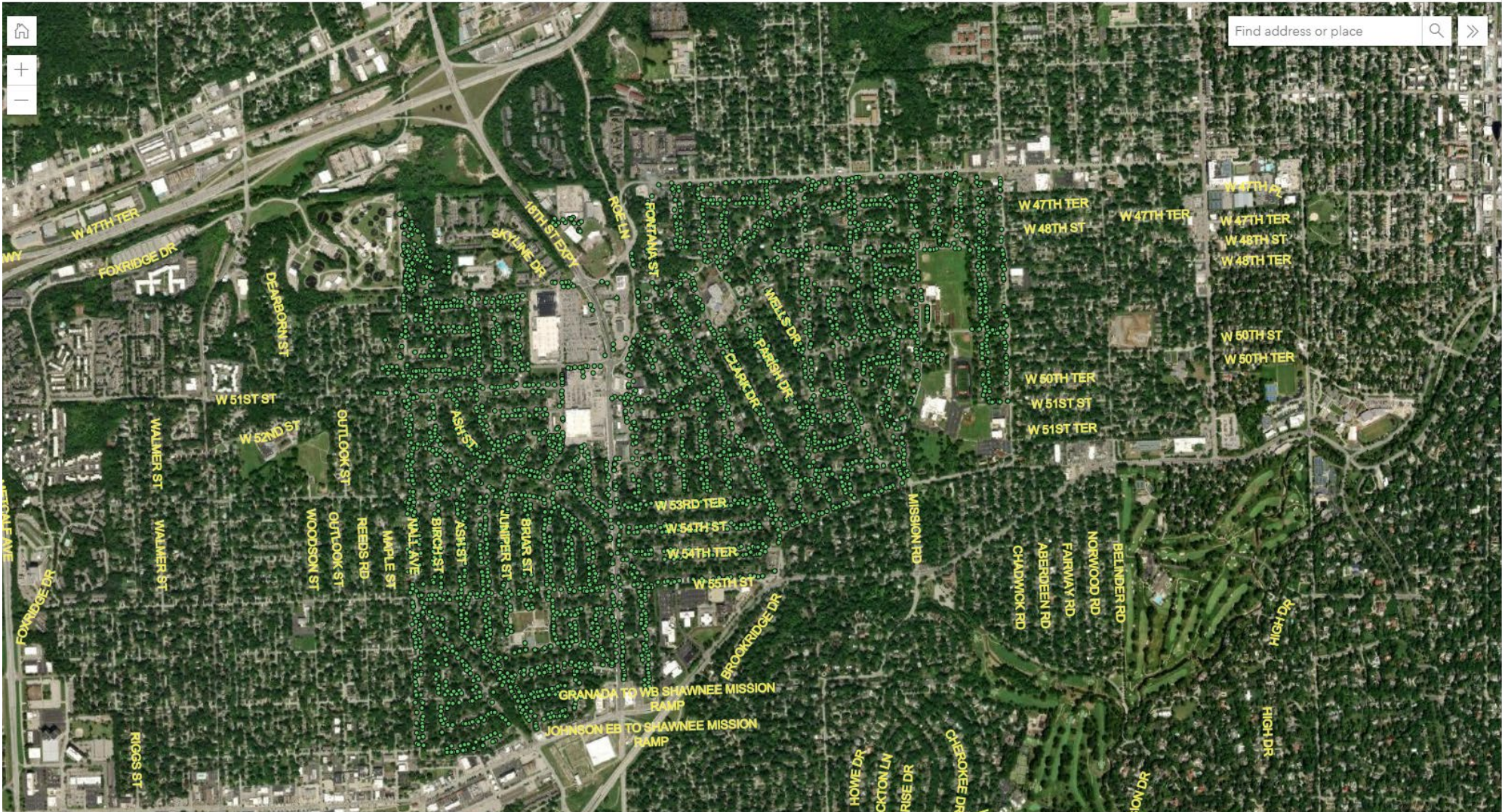
1. Click of the weblink here -  
<https://aims.maps.arcgis.com/apps/instant/basic/index.html?appid=ccd609af3f72404e979a62ef01f102d2>
2. The map will show small green dots that represent inventoried trees
3. Use the mouse scroll button to zoom into a particular area you would like to view
4. Hover the mouse arrow on the green dot and click on it
5. The data attributes associated with the tree will populate. Information about the tree condition, species type, circumference(diameter of tree), height, and recommended maintenance needed. You can also review a picture of the tree by clicking on the JPG file located at the top the attributes table.
6. The search box function in the upper right corner on the map can be used to enter an address to view trees within the proximity of the address entered.



# TREE INVENTORY MAP

## HOME PAGE

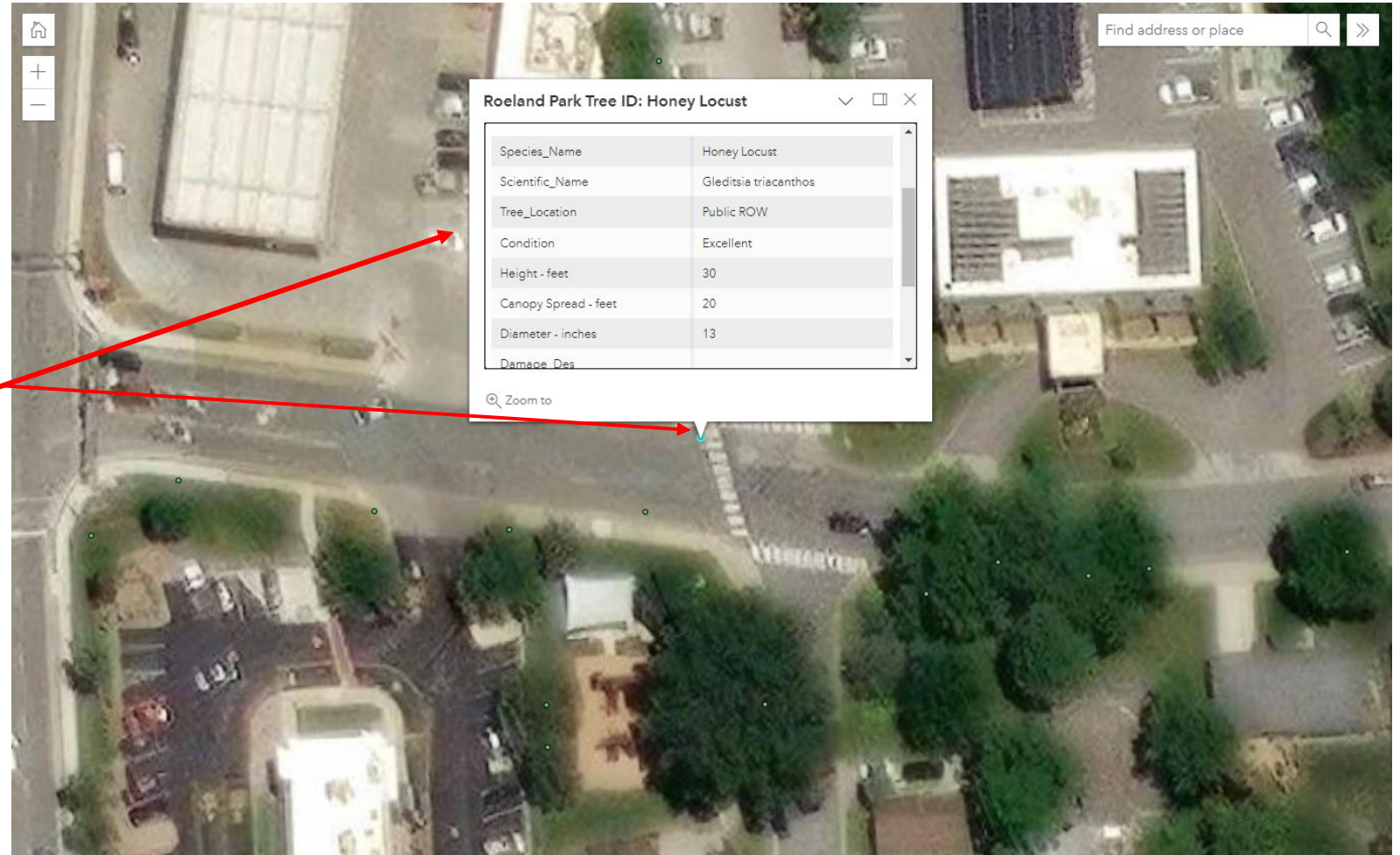
# Roeland Park Tree Inventory & Mapping





# ROELAND PARK TREE INVENTORY -

- Click on **green** dot
- Attributes table will open for selected tree



# ROELAND PARK TREE INVENTORY

- Click on JPG to view picture of the tree



## Roeland Park Tree Inventory & Mapping

Find address or place

Zoom to

Roeland Park Tree ID: Spruce (White)

Click image box below for picture

Photo 1.jpg

|                 |                |
|-----------------|----------------|
| Species_Name    | Spruce (White) |
| Scientific_Name | Picea glauca   |
| Tree_Location   | Yard Tree      |
| Condition       | Excellent      |



# ROELAND PARK TREE INVENTORY

- Home Button – will recenter map
- Manual Zoom Buttons – zoom in & out
- The address search box function can be used to refine search area

Roeland Park Tree Inventory & Mapping



# QUESTIONS?

- Contact Donnie Scharff, Director of Public Works
- Phone – 913-722-5435
- Email – [dscharff@roelandpark.org](mailto:dscharff@roelandpark.org)