

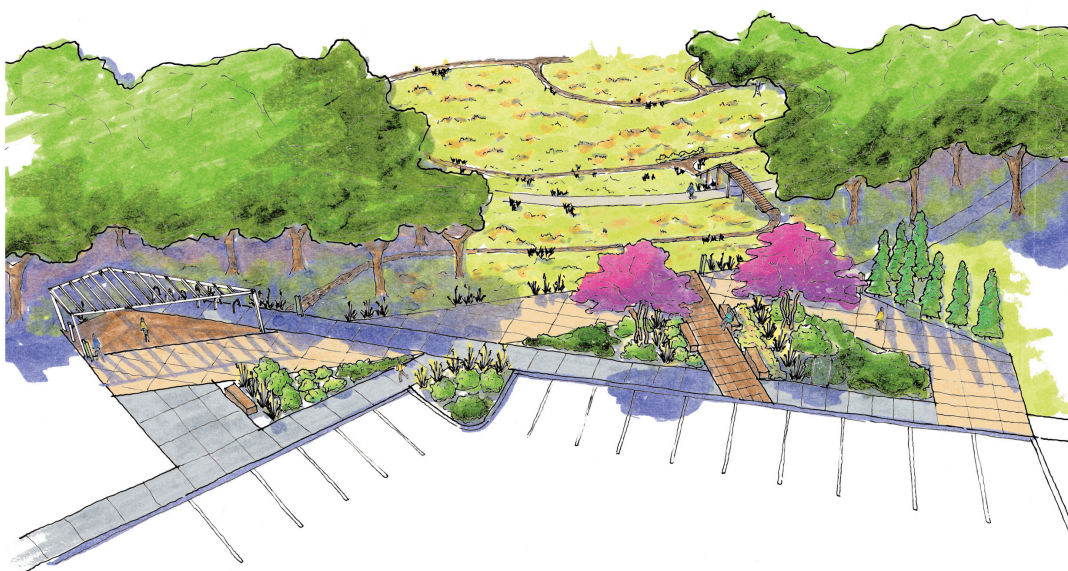


December 2024/January 2025

# THE ROELAND PARKER

Official Newsletter of the City of Roeland Park

## Council Adopts a Master Plan for Nall Park



Rendering of the Nall Park improvements as illustrated in the Master Plan, from Nall Avenue.

The City Council approved an updated master plan for Nall Park on November 4, 2024 – paving the way for future renovations to this 13.6 acre park at the northwest corner of Roeland Park. The City engaged consultants with Lamp Rynearson who began planning sessions with the City Parks & Trees Committee in November 2023. The Committee wanted the park to focus on five key principals: sustainability, accessibility, increased awareness and connection, increased options for older kids, and making the park fun, educational and challenging. Keeping those principals in mind, the consultant held a series of public workshops to gather feedback on various features supporting these goals.

The Master Plan features include a new bike pump track, bike skills track, new bike trails, a new shelter, new play and exercise features, updated restrooms, a new pavilion, arboretum, and walking path. The total estimated project cost to fully implement the master plan is \$3.2 million. The City has applied for multiple grants to support the cost of the project. Design will begin in 2025 and the project may be broken up into multiple phases based on available funding.

## This issue:

### Page 2:

Letter from Mayor Poppa  
Mayor's Tree Lighting  
Holiday Family Adoption

### Page 3:

Leaf Collection Map

### Page 4:

Roeland Park Community  
Center News

### Page 5:

George Shlegel Art Gallery News  
Holiday Coat/Scarf Drive  
City Events & Holidays

### Page 6:

Trash and Recycling Info  
RP Business Roundtable

### Page 7:

DEI Spotlight  
City Contacts

### Page 8:

Buna Vista Traffic Calming  
Update



# Letter From Mayor Poppa



Hey RP,

December is a time for celebration, gratitude, and giving. January offers a fresh start—a time to set goals and plan for the year ahead. As we approach the end of the year and look forward to a new one, I find myself reflecting on all we have accomplished together this past year.

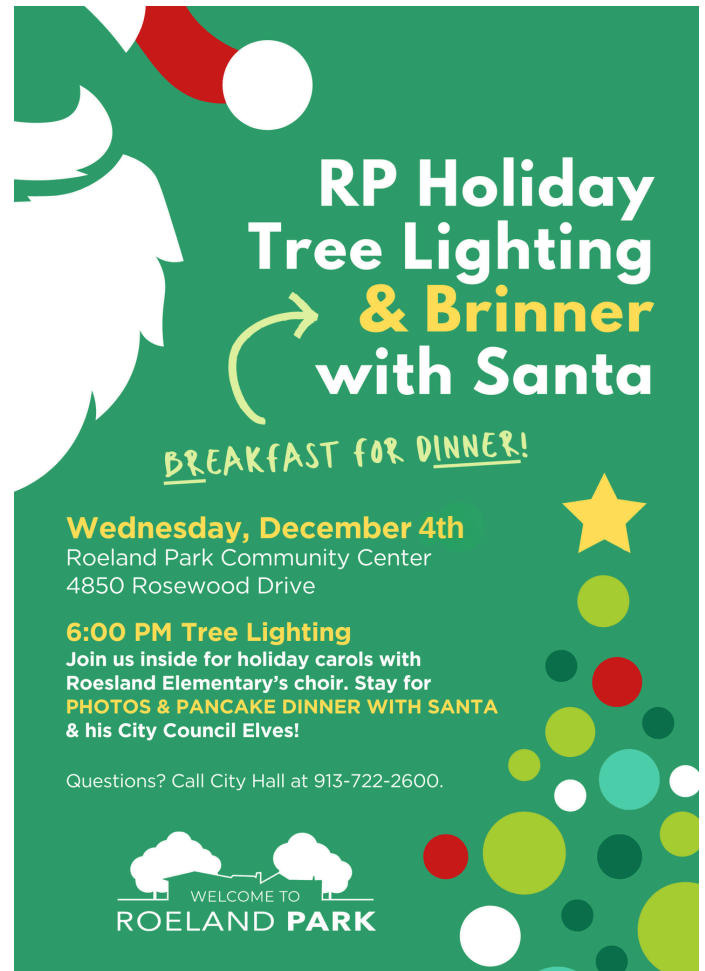
Looking back on 2024, I am proud of the progress we have made. Together, we have invested in our infrastructure, improved our parks and community spaces, and expanded access to homeowner assistance programs. We have also made strides in promoting sustainability, strengthening local businesses, increasing connectivity and enhancing community health and safety.

Thank you to everyone who has contributed to making Roeland Park the best place to live, work, and grow in northeast Johnson County. During the upcoming holiday season, I wish you and your loved ones peace, joy, and warmth. May this time of year be filled with laughter, cherished traditions, and the opportunity to connect with those who matter most.

As we turn the page on 2024, I encourage you to stay engaged, share your ideas, and be a part of shaping the future of Roeland Park. As your mayor, I am committed to listening to your voices and working to ensure that our community thrives. I look forward to continuing to serve you in the year ahead.

Seasons Greetings,

*Mayor Michael Poppa*



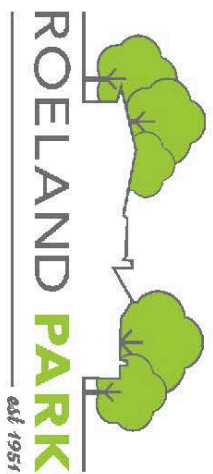
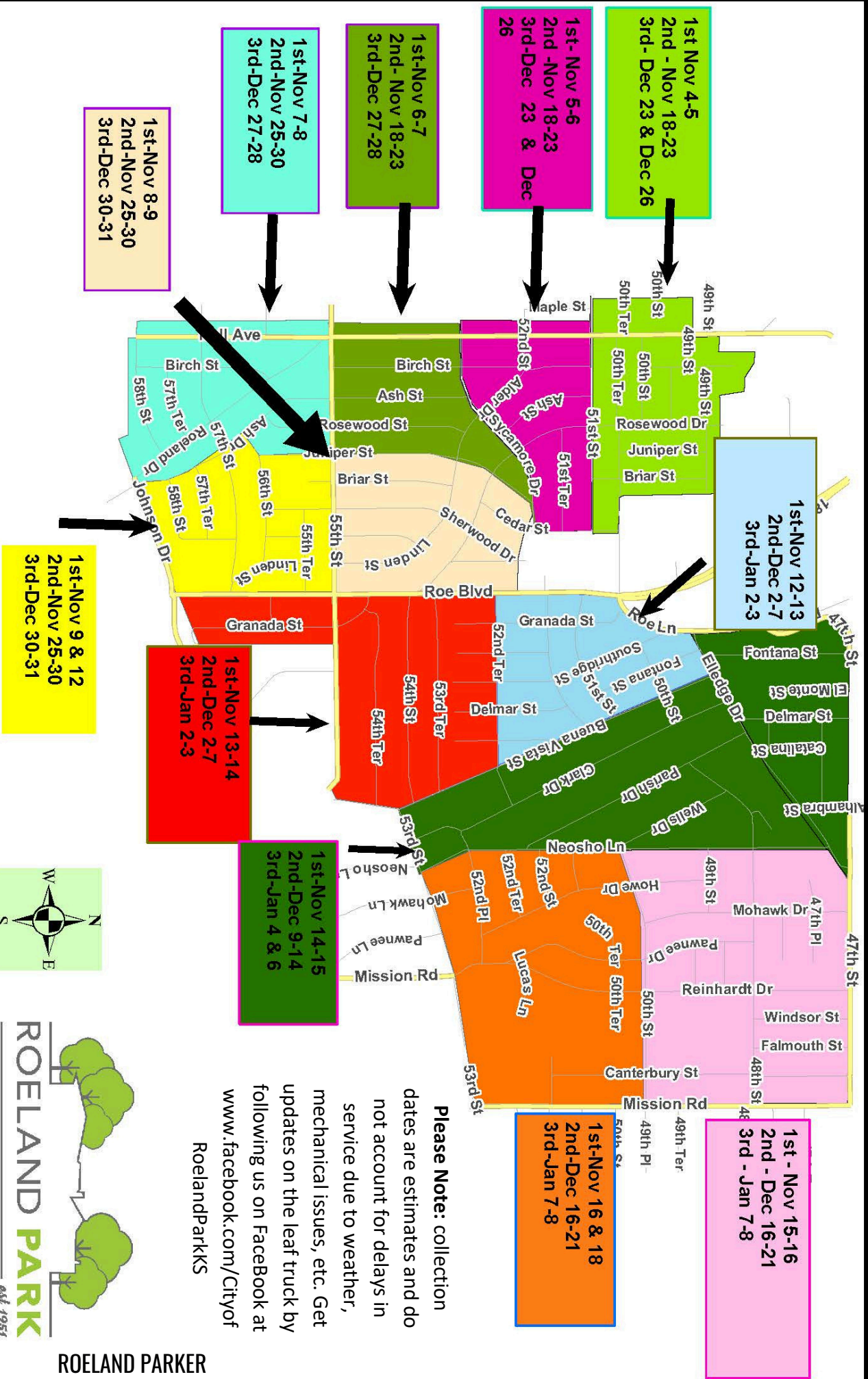
## Holiday Family Adoption

The City of Roeland Park is collaborating with Roesland Elementary and the City of Mission to provide holiday meals and gifts for local families in need. We kindly ask for your assistance in making this holiday season joyous and memorable for our community.

We welcome support from friends and neighbors to help provide meals and gifts for these families. If you interested in contributing, please reach out to Kelley Nielsen at [knielsen@roelandpark.org](mailto:knielsen@roelandpark.org) or call 913-722-2600 to join our email list. She will contact you with information on how you can help.

Thank you for your generosity in supporting your neighbors during this holiday season!

# 2024 Leaf Collection Schedule



**Please Note:** collection dates are estimates and do not account for delays in service due to weather, mechanical issues, etc. Get updates on the leaf truck by following us on Facebook at [www.facebook.com/CityofRoelandParks](https://www.facebook.com/CityofRoelandParks)



# ROELAND PARK COMMUNITY CENTER

## Upcoming Program Highlights: 50 Plus

### Small Group Computer/Cell Phone Tutoring

Dec. 3, 10 am, 1 - 2 hr. class

\$25 / \$27 nonresidents

Join our technology instructor in a small group setting to help you learn, work, create, and thrive in today's digital world!

### Let's Get Trivial

Dec 4, 1:30 pm, 1 - 1.5 hr. event

\$7 / \$8 nonresidents

Join us to test your knowledge, meet new people, and win prizes at this ultimate trivia showdown. Refreshments served.

### Ring in the New Year Bingo

Dec 31, 11 am, 1 - 2.5 hr. event

\$17 / \$19 nonresidents

Enjoy six games of bingo, plus fun activities and brunch!

**Program Registration and Front Desk:**  
(913) 826-3160

**Sports Dome:** (913) 362-8700  
Please call for open gym and court rental availability.

### Community Center Office and Fitness Room Hours

Monday - Thursday: 7am - 8pm  
Friday: 7am - 5pm  
Saturday 8am - 1pm  
Sunday: CLOSED

### Year of the Snake Mah Jongg Party

Jan. 31, 9:30 am, 1 - 5 hr. event

\$19 / \$21 nonresidents

Join us as we celebrate the beginning of a new year on the traditional lunisolar Chinese calendar with some fun games of Mah Jongg. Lunch included!

### Holiday Cookie Creations

Dec 6, 10 am, 1 - 1 hr. session

\$8 / \$9 nonresidents; per child

This enchanting event will encourage creativity as you help your child craft their very own edible work of art! Ages 2-5 with adult.

### Super Science Party!

Jan. 23, 1 pm, 1 - 45 min event

\$6 / \$7 nonresidents; per child

Watch your little become a scientist, dabbling in early chemistry, physics and even engineering! Program includes a snack.

Visit us at [JCPRD.COM/ACTIVITIES](http://JCPRD.COM/ACTIVITIES) to register.

[WWW.FACEBOOK.COM/ROELANDPARKCOMMUNITYCENTER](http://WWW.FACEBOOK.COM/ROELANDPARKCOMMUNITYCENTER)

**Newly renovated spaces are now available to rent!**  
**Call (913) 826-3160 for more information.**

## Preschool Program Highlights

### Amazing Athletes

Jan. 10, 10 am, 5 - 45 min sessions  
\$108 / \$119 nonresidents

Amazing Athletes uses a multi-sport program to introduce the fundamentals of ten different sports in a non-competitive environment. Your child will gain greater confidence and learn to combine fitness with fun!

## 50 Plus Program Weekly Schedule

Programs held at 4850 Rosewood Dr., Roeland Park KS

50 Plus programs with an \* must register in advance

Monday	Tuesday	Wednesday	Thursday	Friday
BOARD GAME BONANZA 1pm HATHA YOGA* 4pm	KNITTING GROUP 1pm	DROP IN PAINT GROUP 12:30pm	MAH JONGG 1pm HATHA YOGA * 4pm TAI CHI * 5pm	HOBBY GROUP 1pm



# George Schlegel Art Gallery

Come view the newest exhibit at George Schlegel Art Gallery in City Hall,  
featuring Roeland Park artists now through January 4, 2025!

## Roeland Park Artists Invitational Exhibit

Featured Artists:

Bernadette "Bernie" Lee - Dean (Louie) Jerome - Dorthy Gerst -  
James S Upton - Laura Rene Baker - Lynda J Leonard - Marek  
Gliniecki - Matt Lero - Teresa Johnson - Sol Anzorena



Artwork by Louie D. Jerome



Artwork by Marek Gliniecki

Do you want to help influence the direction of public art in the community and share your love of art with others? Join the **Arts Advisory Committee!** The Committee has exciting projects coming in 2025, including helping to develop a Public Art Master Plan. Apply online at [roelandpark.org](http://roelandpark.org), or contact Kelley Nielsen at [knielsen@roelandpark.org](mailto:knielsen@roelandpark.org).



## Winter Weather Clothing Drive

The Roeland Park Employee Engagement Team is organizing a Winter Clothing Drive. Please bring new and gently used coats, gloves, scarves and blankets for adults and children.



### Drop Off Dates:

November 18th to December 13th

### Drop Off Locations:

Roeland Park City Hall

4600 W 51st St

Roeland Park Community Center

4850 Rosewood Dr.



## City Events & Holidays

### 2024

**Mayor's Tree Lighting and Brinner with Santa**  
- Wed, December 4, 6p @ Roeland Park Community Center (RPCC)

**Roeland Park Business Roundtable** - Thurs,  
December 5, 10a @ RPCC

**Christmas Holiday** - December 24 - 25,  
City Offices Closed

### 2025

**New Year's Day** - Wed, January 1, City Offices  
Closed

**Martin Luther King, Jr. Day** - Mon, January 20,  
City Offices Closed

**City Council Meeting** - Due to MLK Day, the  
second City Council meeting in January will be  
delayed to Tues, January 21



# Trash Talk

## Trash Amnesty Week & Holidays

Trash amnesty week is **December 30th through January 3rd**. During this week you can put **unlimited** trash bags at the curb without getting additional bag tags from the City. Large item pickup will also occur as scheduled that week. Construction debris is not accepted and would require a dumpster and permit.



GFL and Ripple will not collect trash and recycling on Christmas and New Year's Day. If your collection day falls on one of the holidays, it will get collected the following day.

## Recycle Your Glass

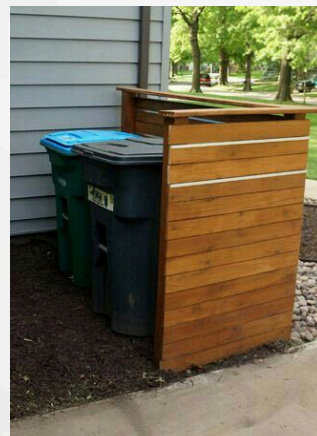
Don't forget – Ripple Glass will pickup your glass curbside on the first trash day of the month. Place your purple bin at the curb each month for curbside service!



## Shield Your Cans!

Per city ordinance, all trash and recycling bins must be stored behind the house, in the garage, or behind a non-transparent screen. In all cases, the bins should not be visible from the street. Screens should be composed of the following:

- non-deciduous shrubs, bushes or trees
- lattice fences or screens that obscure at least 60% of the container
- an opaque structure enclosing the container that is constructed of durable materials, or a chain link fence with barrier weaving.
- Also, remember – when placing your trash and recycling at the curb, please do not leave them at the curb for more than 24 hours.



Example of trash screen

## ROELAND PARK Business Roundtable

### GET READY FOR THE HOLIDAYS SAFELY AND SECURELY

✂ Meet Police Chief Morris and Deputy Police Chief Honas

✂ Meet Cyber Security Expert Matthew Ulasien

✂ Meet Mayor Michel Poppa and Roeland Park City Staff and Councilmembers



Roeland Park Community Center - Skyline Room  
4850 Rosewood Drive, Roeland Park, KS

Thursday, December 5, 2024

10:00 am - 11:00 am

- |          |  |
|----------|--|
| 10:00 am | Meet and greet other Roeland Park businesses |
| 10:15 am | Introductions                                |
| 10:25 am | Presentations on safety and cyber security   |

Call City Hall at 913-722-2600 with any questions or visit [www.projectriserp.com](http://www.projectriserp.com).

Please **RSVP to [jan@projectriserp.com](mailto:jan@projectriserp.com)** with your company name and team members who will be in attendance.

We look forward to having you join this very special event!



# DEI Spotlight

(Diversity, Equity & Inclusion)

Happy Holidays, Roeland Parkers! As we close out the year, we want to celebrate this special season that brings us together across all traditions and backgrounds. Whether you're celebrating Christmas, lighting candles for Hanukkah, gathering for Kwanzaa, or marking the winter season in your own way, we extend warm wishes to you and your loved ones. This is a time for connection, gratitude, and community, and we're grateful for the vibrant, diverse spirit that makes Roeland Park such a wonderful place to call home. Here's to a joyful holiday season and a bright new year ahead.

The winter season has numerous ceremonies that celebrate with lights! Highlighted below are just a few examples.

**Christmas-** Lights play a central role in Christmas traditions, symbolizing warmth, hope, and joy during the winter season. These include Christmas tree lights, advent candles, outdoor light displays, luminaries and candlelight services, and tree-lighting ceremonies.

**Diwali-** Each year, Hindus and Sikhs observe Diwali during the lunar month of Kartika, which is October to November on the Western calendar. To celebrate Diwali, people set off fireworks, hang strings of electric lanterns, and light earthen oil lamps called diyas. Families and friends exchange gifts of sweets and fruit as tokens of good wishes.

**Hanukkah-** Hanukkah celebrates the Jewish peoples' victorious fight for religious freedom in 165 B.C. Jewish people light a nine-branched candelabrum, called a menorah. This ritual gives the holiday its nickname—the Festival of Lights. Every evening for eight nights, Jewish families sing blessings and light a candle, adding one each night as the week passes.

**Kwanzaa-** An annual celebration of African/African American history and culture that highlights 7 core principles. One of the Seven Candles is lit daily, starting with the Unity (Black) candle, then alternating red and green, reciting each principle until all candles are ablaze. On day seven, there is a feast with food, music, dancing, singing, and gifts for the children.

**Lunar New Year-** Lunar New Year is a major holiday and fun-filled celebration across much of Asia. Celebrations include family reunion dinners, fireworks & firecrackers, decorating with red lanterns & banners, cleaning, and new clothes.

**Calling all Roeland Park residents passionate about diversity, equity, and inclusion!** Join our DEI Committee and make a meaningful impact in our community. With just a monthly hour-long commitment, you can contribute to fostering a more inclusive environment for all. Sign up today and be a part of something impactful. Email us at [racialequitycommittee@roelandpark.org](mailto:racialequitycommittee@roelandpark.org) for more information.



## City Contacts



 Search

City Administrator - Keith Moody  
[kmoody@roelandpark.org](mailto:kmoody@roelandpark.org)

Finance Director/Asst. City Administrator -  
Jennifer Jones-Lacy  
[jjones-lacy@roelandpark.org](mailto:jjones-lacy@roelandpark.org)

City Clerk- Kelley Nielsen  
[knielsen@roelandpark.org](mailto:knielsen@roelandpark.org)

Chief of Police- John Morris  
[emorris@roelandpark.org](mailto:emorris@roelandpark.org)

Director of Public Works - Donnie Scharff  
[dscharff@roelandpark.org](mailto:dscharff@roelandpark.org)

Mayor - Michael Poppa  
[mpoppa@roelandpark.org](mailto:mpoppa@roelandpark.org)  
(913) 722-2600

Ward 1 - Jan Faidley  
[jfaidley@roelandpark.org](mailto:jfaidley@roelandpark.org)  
(913) 709-6812

Ward 1 - Tom Madigan  
[tomrpks@gmail.com](mailto:tomrpks@gmail.com)  
(913) 526-6997

Ward 2 - Jen Hill  
[jhill@roelandpark.org](mailto:jhill@roelandpark.org)  
(913) 722-2600

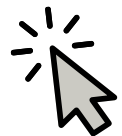
Ward 2 - Benjamin Dickens  
[bdickens@roelandpark.org](mailto:bdickens@roelandpark.org)  
(913) 544-1259

Ward 3 - Emily Hage  
[ehage@roelandpark.org](mailto:ehage@roelandpark.org)  
(913) 722-2600

Ward 3 - Kate Raglow  
[kraglow@roelandpark.org](mailto:kraglow@roelandpark.org)  
(913) 722-2600

Ward 4 - Jeff Stocks  
[jstocks@roelandpark.org](mailto:jstocks@roelandpark.org)  
(913) 722-2600

Ward 4 - Matt Lero  
[mlero@roelandpark.org](mailto:mlero@roelandpark.org)  
(913) 722-2600





## Buena Vista Traffic Calming Update

On July 15th, the City Council approved the installation of temporary traffic calming measures on Buena Vista in Roeland Park which includes four separate installations between 51st and 53rd Streets. Two speed humps will be installed, the first just south of the stop sign at 51st Street, and the second just south of Sycamore Drive and north of Catalina. Two speed tables will be installed south of Catalina Street and another between W 52nd Terrace and north of W 53rd Terrace. All temporary devices will have wheel cutouts to accommodate emergency vehicles.

**Please Note:** the installation of the traffic calming devices have been delayed due to a production error. Staff anticipates the devices will be installed by early December. Once in place, we encourage your feedback! You can submit your thoughts through a form on our website. Go to [roelandpark.org](https://roelandpark.org) – on the homepage, under News & Calendar, click on the “Buena Vista Traffic Calming Feedback.” We appreciate your support in helping to make the City safer for all who travel our streets.



*Example of a temporary speed hump with wheel cutouts for emergency vehicles.*

## ROELAND PARK COMMUNITY CENTER REMINDER

The RPCC will be under construction starting in January of 2025. Renovations will occur in stages and will start with the fitness center. During construction, the fitness center will be closed and memberships will be paused.

Renovations will also impact room rentals. For specific questions, please contact RPCC at (913) 826-3160.

The Child Development Center will continue to operate during construction but will relocate to another room within RPCC.

**Thank you for your patience as we work to make improvements to the Roeland Park Community Center!**