



June/July 2025

# THE ROELAND PARKER

Official Newsletter of the City of Roeland Park

## Planning Makes Perfect: City Preparing for the Future

The City is embarking on an exciting journey to shape the future with three major plans that will guide decisions for years to come. These plans are not just documents—they're a roadmap built with input from our community, insights from existing strategies, and expertise from industry leaders. By crafting thoughtful, comprehensive plans, Roeland Park is not only building on our successes but also paving the way for an even brighter future.

### Public Art Master Plan



The Public Art Master Plan provides a comprehensive strategy to integrate public art throughout Roeland Park, reflecting our community's vision and values. Partnering with Designing Local, a consultant that specializes in building vibrant public spaces through Art, the City aims to highlight what makes Roeland Park special for families, businesses and cultural experiences. **We want to hear from you!** Share your thoughts on public art by visiting [roelandparkpublicart.com](http://roelandparkpublicart.com) or scanning the QR code to take the quick survey. No experience is necessary and all ideas are welcome!



### Strategic Plan Update



The City has contracted with Porchlight Insights to lead a resident engagement process focused on updating the strategic plan. The process will synthesize other long range planning efforts completed by the City. The current strategic plan, adopted in 2015, guided the completion of 196 advancing initiatives with a total investment of \$36 million in the last 10 years. The plan will include adoption of Mission and Vision Statements for the community that are consistent with the Values and Goals adopted by Council. The strategic plan framework will result in measurable goals and objectives that the City can act upon in the future.

### Parks & Rec Master Plan



This plan will create a roadmap to ensure quality facilities and amenities throughout the community for the future. The City is also working with Porchlight and DRAW Architecture to develop a system-wide approach to evaluate parks, recreation, open space, trails, facilities, and amenities to develop goals and achievable strategies. This plan will be used as a resource for future development and redevelopment of the City's parks and recreational facilities. The city has adopted a bike and pedestrian infrastructure plan as well as master plans for our two largest parks (R Park and Nall Park). The Parks and Recreation Master Plan will reflect these studies as well as future opportunities for new spaces.

## This issue:

### Page 2:

Arts Advisory Committee Updates  
Art Contest  
Glass Recycling Reminders  
Leaf Truck Naming Contest  
Tree Ordinance

### Page 3:

City Events  
Letter from the Mayor  
Fireworks Display Details

### Page 4:

Roeland Park Community  
Center News

### Page 5:

DEI Spotlight

### Page 6:

Recent Events Recap  
Meet our New RP Staff

### Page 7:

City Contacts  
Project RISE Business Spotlight

### Page 8:

Roeland Park Community Center  
Fitness Room Reopening



## ARTS UPDATE



The Roeland Park Arts Advisory Committee is actively working to bring more art and culture to our community. Here's what's in progress:

1. **Public Art Master Plan** – A comprehensive plan to guide future public art initiatives.
2. **Rain Activated Art** – Demonstrations held at the Nall Park Ribbon Cutting and Earth Day events.
3. **Public Art Contest** – Details below.
4. **Artist-In-Residence Program** – Offering studio space, a stipend, and a showcase opportunity for a selected artist. Application information will be announced soon.
5. **Art of Dance** – A Swing Dance event is planned for late summer, featuring dance instruction and performances. Stay tuned for dates and details.

Exciting things are happening in Roeland Park –We hope you take part!

## ART CONTEST

Time to get creative – we're hosting a community-wide art contest! Participants have until August 1st to complete an original work of art and display it in your front yard. Create something new or put your own twist on an existing piece. After the contest closes, a map of all projects and photos will be posted online, and the community will vote on their favorites.

Winners will receive prizes and be featured in the fall Roeland Parker. Apply now and learn more at [roelandpark.org/450/Art-Contest](http://roelandpark.org/450/Art-Contest) or scan the QR code.



## Friendly Heads Up!

Did you know that if you are using the curbside glass recycling service that you can sign up for collection day reminders? It's a helpful feature available to anyone who has curbside glass with Ripple. If you're not currently using this service, now is a great time to start. To sign up for the reminders or to learn more visit [rippleglass.com/roeland-park](http://rippleglass.com/roeland-park).

## LEAF TRUCK NAMING CONTEST

Got a great name for our leaf collection truck? Now's your chance to make it official! Starting June 1st, submit your name ideas on the Leaf Collection page at [roelandpark.org/328/Fall-Leaf-Pickup-Program](http://roelandpark.org/328/Fall-Leaf-Pickup-Program).

In late June, we'll narrow the entries down to 3-5 finalists, and you'll get to vote for your favorite. The winning name will be displayed on the truck, and the winner will be featured in the Roeland Parker. We're excited to see your creative ideas!



**SUBMIT YOUR  
IDEAS HERE!**

## Tree Ordinance Reminder

Last September, City Council approved Ordinance No. 1062, establishing rules and procedures for protecting mature trees in city right-of-way, parkland, greenspace, city-owned properties and the front yards of private lots. Protected trees are those with trunks that measure 12 inches or larger in diameter at 4.5 feet above the ground. The ordinance states that protected trees in these locations cannot be removed without first obtaining authorization from the City Arborist. If removal is granted for a healthy tree located in one of these protected areas, a new tree must be planted by the property owner. If it is unfeasible for the tree to be replaced, the property owner can instead contribute to the newly established Tree Fund to help cover the cost of tree replacement in other parts of the City. The fund may also help cover the cost of tree trimming and removal for those who meet income guidelines outlined in the Tree Fund policy. If the City Arborist finds a tree to be diseased, dead or dying, the property owner can remove it without contributing to the Tree Fund or replacing the tree. For more information on this policy including the full ordinance, please visit [www.roelandpark.org](http://www.roelandpark.org).





# LETTER FROM THE MAYOR

Hey RP –

Earlier this spring, I had the opportunity to ride along with a volunteer for Johnson County's Home Delivered Meals program — commonly known as Meals on Wheels. It was an incredibly humbling and inspiring experience to witness firsthand how a simple act of delivering a warm meal can bring nourishment, comfort, and a human connection to our home-bound neighbors. This program is just one of many vital services offered by Johnson County's Aging and Human Services Department, which also provides transportation, case management, utility assistance, food pantries, and caregiver support for residents in need. Visit [jocogov.org](http://jocogov.org) to learn more about these services.

As we navigate a time of increasing uncertainty at the federal level, where safety net funds are being taken away from local agencies, it's more important than ever that we support our community's service programs. Johnson County's Aging and Human Services department is a lifeline for many, and programs like Home Delivered Meals rely heavily on the commitment of volunteers and local support to meet growing demand. These services ensure that vulnerable members of our community can continue to live independently and with dignity.

That's why I'm calling on every member of the Roeland Park community to make it a point this summer to give back intentionally. Whether it's donating to a nonprofit you believe in, volunteering for Johnson County's Aging and Human Services, or offering your time

and skills to a local cause—your contributions make a difference. Now more than ever, our neighbors need us to step up where government support is falling short.

For residents who may be facing financial challenges themselves, please remember that Roeland Park offers several grant and assistance programs for those who qualify. These include home improvement grants, stormwater cost-sharing, and assistance for low-income households, all of which can be found on our city's website at [roelandpark.org/390/Grants-Assistance-Programs](http://roelandpark.org/390/Grants-Assistance-Programs). We are here to help and connect you to the resources you need.



Mayor Poppa pictured with Randy Fowler (volunteer) and Katie Baker (Home-Delivered Meals Volunteer Coordinator).

Wishing you all a fulfilling summer of service. As always, please don't hesitate to reach out with any questions, concerns, or ideas. Let's continue working together to make Roeland Park a compassionate and connected community for all.

Best Wishes,

Mayor Michael Poppa

## Events & Holidays

**Juneteenth**  
Thursday, June 19  
*City Offices Closed*

**Free Summer Concert**  
Saturday, June 28, 6 PM  
@ R Park

**Trash Amnesty Week**  
July 7 - July 11  
City-Wide

**Fireworks Display**  
Thursday, July 3, 9:30 PM  
@ Bishop Miege High School

**Independence Day**  
Friday, July 4  
*City Offices Closed*

**Free Summer Concert**  
Saturday, July 19, 6 PM  
@ R Park

ROELAND PARKER

ROELAND PARK, FAIRWAY, WESTWOOD, MISSION WOODS AND WESTWOOD HILLS PRESENT

# 2025 FIREWORKS DISPLAY

**THURSDAY JULY 3<sup>RD</sup> 2025**  
DISPLAY BEGINS AT 9:45 PM  
RAINOUT DATE: SATURDAY JULY 5<sup>TH</sup> 2025

**BISHOP MIEGE HIGH SCHOOL**  
5041 REINHARDT DR, ROELAND PARK, KS 66205

**Parking Information:**  
General parking along with handicapped parking will be available at Bishop Miege on a first-come basis. The Bishop Miege parking lot will be closed once all parking spots are filled. There will be no parking permitted on the Saint Agnes property. General parking will be available around the venue, but there will be no-parking signs posted on various streets and any violations may result in towed vehicles.



# ROELAND PARK COMMUNITY CENTER

## 50 Plus Program Highlights

### Comedy Improv Class

Jun 4, 5 pm, 9 - 1.5 hr. course  
\$65 / \$67 nonresidents

Join us for a fun and engaging comedy improv class where you learn to think on your feet, unleash your creativity, and build confidence in a supportive environment!

### Technology Workshop for Managing Your Photos

June 24, 10am, 1 - 2 hr. class  
\$22 / \$24 nonresidents

This beginner's class focuses on how to organize, share, edit and store your digital pictures with ease. Whether you're looking to create photo albums, free up space, or preserve memories, this hands-on session will provide you with practical tips and user-friendly tools!

### Technology Small Group Tutoring

July 1, 10am, 1- 2 hr. class  
\$25 / \$27 nonresidents

Join our technology instructor in a small group setting to help you learn, work, navigate and thrive in today's digital world!

### Zumba

July 12, 9 am, 1 - 1 hr. session  
\$43 / \$48 nonresidents

This easy-to-follow choreography focuses on balance, range of motion, coordination, and fun! Perfect for older active adults who are looking for a modified Zumba experience.

**Our newly renovated Fitness Center is now open!**

## Preschool and Youth Program Highlights

### Becoming a Babysitter

Jun. 3, 9am, 3 - 3 hr. lessons  
\$98 / \$108 nonresidents

Become a responsible babysitter. We'll cover safety, job expectations and age appropriate activities for kids. A Babysitter booklet and CPR /First Aid certification is included. Ages 12-16.

### Challenge Island: Island Doll Wavemaker (Ages 6-11)

Jun. 9, 9 am, 5 - 3 hr.  
\$175 / \$195 nonresidents

This pink-powered camp is energized by the legacies of wavemaking female role models. With an eye for design and a taste for adventure, this stylish STEAM team will make their own waves!

**Program Registration and Front Desk:**  
(913) 826-3160

**Sports Dome: (913) 362-8700**

Please call for open gym and court rental availability.

### Community Center Office Hours

Monday - Friday: 7am - 5pm  
Sat - Sun: Closed

**Newly renovated spaces are now available to rent! Call (913) 826-3160 for more information.**

Visit us at [JCPRD.COM/ACTIVITIES](http://JCPRD.COM/ACTIVITIES) to register.

[WWW.FACEBOOK.COM/ROELANDPARKCOMMUNITYCENTER](http://WWW.FACEBOOK.COM/ROELANDPARKCOMMUNITYCENTER)

## 50 Plus Program Weekly Schedule

Programs held at 4850 Rosewood Dr. Roeland Park KS

50 Plus programs with an \* must register in advance

Monday  
HATHA YOGA\* 4pm

Tuesday  
KNITTING GROUP  
1pm

Wednesday  
DROP IN PAINT GROUP  
9:30am

Thursday  
MAH JONGG 1pm  
HATHA YOGA\* 4pm  
TAI CHI\* 5pm

Friday  
HOBBY GROUP  
1pm



# DEI Spotlight

(Diversity, Equity & Inclusion)

June is a month of significant celebration and reflection as we recognize both Pride Month and Juneteenth! These observances provide opportunities to honor the diversity and resilience of our community, to learn from our past, and to commit to a more equitable future. The City of Roeland Park encourages all residents to participate in local events, educate themselves on the history and significance of these observances, and support organizations that are working to create a more inclusive and just society.

## What is Pride Month?

Pride Month is celebrated annually in June to honor the 1969 Stonewall Uprising, a pivotal moment in the fight for LGBTQIA+ rights. It's a time to recognize the contributions of LGBTQIA+ individuals throughout history and in our community, to celebrate LGBTQIA+ culture, and to advocate for equality and acceptance.

## How to Celebrate & Show Support in Kansas City:

- Attend Local Pride Events: KC PrideFest 2025 marks 50 years of Pride in Kansas City with its largest celebration yet! Held at Theis Park from June 6-8, the festival includes live entertainment, family-friendly activities, and a diverse range of local and national talent. The event also features Kansas City's largest Pride Parade, starting in Westport on June 7 at 11 AM and concluding at Theis Park as the festival opens at noon.
- Support LGBTQIA+ Owned Businesses: Support local businesses owned and operated by members of the LGBTQIA+ community:
  - Imagine Wholeness Massage Therapy in RP
  - Imagine Radiant Skin Therapy in RP
  - Donutology
  - Hamburger Mary's
  - Ragazza Food & Wine
  - Servaes Brewing Company
- Educate Yourself and Others: Take the time to learn about LGBTQIA+ history, current issues, and the importance of allyship. The Cedar Roe Library & other Johnson County Libraries feature Pride resources throughout the month.
- Local Organizations to Support:
  - Mid-America LGBT Chamber of Commerce
  - Gay and Lesbian Archives of Mid-America (GLAMA)

## What is Juneteenth?

On June 19th, Juneteenth commemorates the emancipation of enslaved African Americans in Texas in 1865. This day marks a significant turning point in American history and is a time to reflect on the legacy of slavery, celebrate African American resilience and culture, and recommit to the ongoing work of racial justice and equity.

## How to Celebrate & Support in Kansas City:

- Attend Juneteenth Celebrations: Juneteenth at the Johnson County Arts & Heritage Center is June 7 from 10-1. This FREE family-friendly event, built with community partners, provides an opportunity to honor the history and celebrate Juneteenth with art, music, food, and more! The 14th Annual JuneteenthKC Heritage Festival takes place at the 18th & Vine Historic Jazz District on June 21, 2025.
- Support Black-Owned Businesses: Support local Black-owned businesses in Johnson County & Kansas City:
  - The Black Pantry
  - Brain Freeze Mobile Daquiri Bar
  - Gates BBQ
  - Freight House Fitness
  - Mattie's Foods
  - Mesob
  - Niece's Restaurant
  - Ruby Jeans Juicery
  - Taste of Africa
- Local Organizations to Support:
  - The Black Archives of Mid-America
  - The 18th & Vine Historic District
  - The Urban League of Greater Kansas City

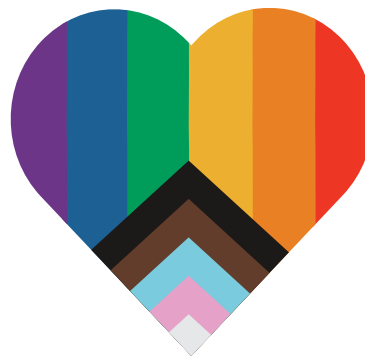
## July is Disability Pride Month:

It is a time to celebrate the unique identities and contributions of people with disabilities, challenge ableism, and promote inclusion in Roeland Park! This month, we honor the history of the disability rights movement and reaffirm our commitment to building a more accessible and equitable city for all.

This month is an opportunity to:

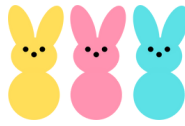
- Celebrate Identity: Acknowledge and embrace the diverse experiences and identities of people with disabilities.
- Challenge Ableism: Confront and dismantle ableism, the social prejudice against people with disabilities.
- Promote Inclusion: Advocate for policies and practices that ensure accessibility and full participation in all aspects of community life.

Interested in joining the RP DEI Committee? Email [racialequitycommittee@roelandpark.org](mailto:racialequitycommittee@roelandpark.org).





## EGG HUNT FUN



On Saturday, April 12<sup>th</sup>, hundreds of families came out to R Park and joined in on some spring festivities. Thanks to all who joined us on such a beautiful spring day!



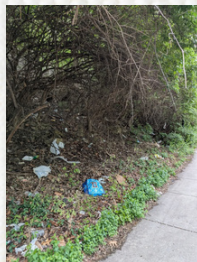
## EARTH DAY CLEAN UP



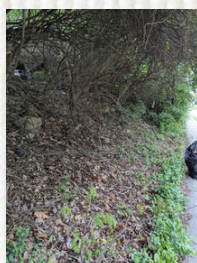
On Saturday, April 19<sup>th</sup> members of the Sustainability Committee and other volunteers braved the gray and chilly morning to clean up trash. Celebrating Earth Day, the volunteers cleaned areas around City Hall and local businesses and collected 17 large bags of trash, well done!



**BEFORE**



**AFTER**



## Meet Cesar Limon

Police Officer



**Q. How long have you been a police officer?**

A. I've been a police officer for about two years.

**Q. What is your favorite part about working for Roeland Park?**

A. My favorite part about working for Roeland Park is the sense of brotherhood within the department and the incredible support from the city's staff.

**Q. What were you doing before you came to Roeland Park?**

A. Before joining Roeland Park, I worked for the Lenexa Police Department. Prior to that, I was a math teacher at Westridge Middle School.

**Q. What do you like to do for fun?**

A. In my free time, I enjoy running races, coaching my two sons sports teams. Hiking with my wife and traveling.



## Meet Joey Carley

Management Analyst

**Q. What inspired you to get into local government administration?**

A. I'm fascinated by learning how different cities function and what makes communities special. I have a passion for serving the public and learning how to do it best.

**Q. Where were you before coming to Roeland Park?**

A. I worked for about 6 years in the construction and engineering industry, then spent the last 5 years with the City of Raytown, Missouri in their Public Works Department.

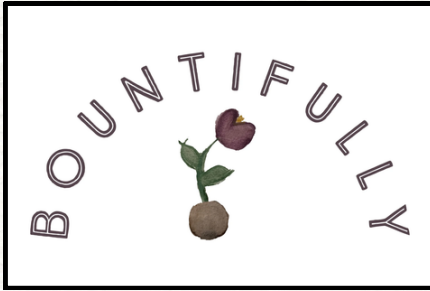
**Q. What's your favorite thing so far about working for Roeland Park?**

A. The energy and engagement from the residents is impressive and one of the things that drew me here. Also, the Council and City staff are welcoming and collaborative, it's such an inviting community!

**Q. What do you like to do for fun?**

A. Spending time with my wife and two little boys as much as possible. When I'm not doing that, I like to read, garden, paint, and play disc golf.





## Project RISE Business Spotlight: Bountifully, LLC



**What is your mission?** Cultivating community and sharing the bounty. Bountifully is proud to share the bounty, giving back 10% of every sale to fight food insecurity in Kansas City and beyond.

**Why do you like doing business in Roeland Park?** Roeland Park is centrally located in the metro, has community spirit, and that hometown feel.

**What would you like people to know about your business?** Bountifully, LLC was founded in 2021 by Kara Macy, from a passion for handmade pottery, local flowers, and giving back. Bountifully is a woman-owned shop offering handcrafted, wheel-thrown stoneware vases, mugs, and tabletop décor made in her home studio. Additionally, Kara sustainably grows unique and hard-to-find cut flower varieties for fresh local bouquets & dried floral art, supplementing with locally and American grown blooms whenever possible. Bountifully offers local floral delivery Monday through Friday, as well as a flower bar & guided floral workshops.

Check out Bountifully on Instagram: @bountifullykc or visit their website at <https://bountifully.square.site>.

To learn more about Project RISE or to nominate a business to be featured in a future issue of the Roeland Parker, please visit [roelandpark.org](https://roelandpark.org) and search Business Feature for the Roeland Parker

## City Contacts



Search

City Administrator - Keith Moody  
[kmoody@roelandpark.org](mailto:kmoody@roelandpark.org)

Finance Director/Asst. City Administrator -  
Jennifer Jones-Lacy  
[jjones-lacy@roelandpark.org](mailto:jjones-lacy@roelandpark.org)

City Clerk- Kelley Nielsen  
[knielsen@roelandpark.org](mailto:knielsen@roelandpark.org)

Chief of Police- Cory Honas  
[chonas@roelandpark.org](mailto:chonas@roelandpark.org)

Director of Public Works - Donnie Scharff  
[dscharff@roelandpark.org](mailto:dscharff@roelandpark.org)

Mayor - Michael Poppa  
[mpoppa@roelandpark.org](mailto:mpoppa@roelandpark.org)  
(913) 722-2600

Ward 1 - Jan Faidley  
[jfaidley@roelandpark.org](mailto:jfaidley@roelandpark.org)  
(913) 709-6812

Ward 1 - Tom Madigan  
[tomrpks@gmail.com](mailto:tomrpks@gmail.com)  
(913) 526-6997



Ward 2 - Jen Hill  
[jhill@roelandpark.org](mailto:jhill@roelandpark.org)  
(913) 722-2600

Ward 2 - Benjamin Dickens  
[bdickens@roelandpark.org](mailto:bdickens@roelandpark.org)  
(913) 544-1259

Ward 3 - Emily Hage  
[ehage@roelandpark.org](mailto:ehage@roelandpark.org)  
(913) 722-2600

Ward 3 - Kate Raglow  
[kraglow@roelandpark.org](mailto:kraglow@roelandpark.org)  
(913) 722-2600

Ward 4 - Jeff Stocks  
[jstocks@roelandpark.org](mailto:jstocks@roelandpark.org)  
(913) 722-2600

Ward 4 - Matt Lero  
[mlero@roelandpark.org](mailto:mlero@roelandpark.org)  
(913) 722-2600

# COMMUNITY CENTER FITNESS ROOM NOW OPEN

After four months of utilizing alternative facilities, we're excited to announce that the community center fitness room has officially reopened as of Monday, May 5. The refreshed space is ready to welcome you back with a modernized layout and new amenities designed to elevate your workout experience. Here's what you can expect:

- A more open layout with improved lighting and a higher ceiling
- Updated flooring and new fitness equipment, including kettlebells, bands, and mats
- Additional TVs with phone audio compatibility, allowing you to enjoy your preferred music or shows
- New hip abductor/adductor machine and upgraded leg extension/curl machine
- Convenient cubby and bench area for storing personal belongings
- Easy-access water bottle filler right inside the fitness room

All memberships resumed on Monday, May 5. For questions about your membership or to confirm your expiration date, please contact Lisa at 913-826-3160.

We appreciate your patience during the closure and look forward to helping you get back on track in our revitalized fitness space. Let's get moving again – stronger and better than ever!

