

December 2025/January 2026

THE ROELAND PARKER

Official Newsletter of the City of Roeland Park



BREAKING GROUND

Members of the Governing Body break ground on the long awaited mixed use development known as “The Rocks” at 4800 Roe Parkway. Pictured above from left: Councilmembers Matt Lero, Emily Hage, Debbi Schraeder, Mayor Poppa, Councilmembers Jen Hill and Jan Faidley. Learn more about the project in the Mayor’s Letter on page 2.

R PARK’S NEWEST LANDMARK: **The Mighty Bike Arrives**

Roeland Park has a bold new addition to R Park—the Mighty Bike, a larger-than-life play sculpture designed to spark imagination, adventure, and plenty of smiles. Envisioned by artist Matt Kirby and brought to life through the craftsmanship of Machine Head and DI Build, this one-of-a-kind piece celebrates our community’s creativity, love of play, and passion for cycling.

Continued on pg. 2



This issue:

Page 2:

Letter from the Mayor
Mighty Bike Arrives

Page 3:

Roeland Park Community
Center News

Page 4:

City Events/Holidays
Charitable Opportunities
Winter Shoveling Reminder

Page 5:

DEI Spotlight
Police Feature

Page 6:

Art Committee Year in Review
Schlegel Gallery Update
Holiday Decorating Contest

Page 7:

DEI Corner
City Contacts

Page 8:

2026 Changes to Trash Service
Winter Warrior Program

LETTER FROM THE MAYOR

Hey RP,

Roeland Park has a lot of exciting projects happening as we close out 2025, and I'm grateful for the continued energy, collaboration, and community spirit that make these milestones possible.

After several years of planning and preparation, I'm pleased to share that construction is officially beginning on The Rocks, the mixed-use redevelopment at 48th and Roe Parkway. Crews are now mobilizing on-site, marking a major step forward in transforming a long-underutilized parcel into a vibrant community asset. Once complete, The Rocks will bring 287 Class A residential units, space for a sit-down restaurant, and a structured parking facility — representing one of the most significant private investments in Roeland Park in recent years.

This project exemplifies our commitment to thoughtful, community-focused growth. It includes a \$500,000 public art investment, 5% of units designated as affordable/attainable, high-quality sustainability standards designed to meet Green Globes or Silver LEED certification, and 71 universally designed units that support residents of all ages and abilities. With financing secured this fall, we are excited to see this vision move from paper to reality.

In addition to major development progress, we are continuing to enhance our parks and public spaces. One of the most anticipated additions is the new Mighty Bike play sculpture in R Park — a colorful, interactive piece imagined by artist Matt Kirby and brought to life by Machine Head and DI Build. We look forward to welcoming families to enjoy this playful new landmark as final touches wrap up.



Rendering of "The Rocks" Mixed Use Apartments and Restaurant

And of course, the holiday season brings cherished traditions that make Roeland Park feel like home. I hope you'll join us for the Mayor's Tree Lighting and Brinner with Santa on December 3rd, a joyful evening that brings neighbors of all ages together to celebrate the warmth and generosity of our community.

As we say goodbye to 2025, I am proud of the progress we've made and optimistic about the year ahead. Thank you for being part of what makes Roeland Park such a vibrant and welcoming place to live.

Wishing you a wonderful holiday season and a bright start to 2026.

Best Wishes,

Mayor Michael Poppa



THE MIGHTY BIKE ARRIVES

from page 1

Located near the Traffic Garden, the Mighty Bike is built for kids ages 5 and up to climb, explore, and enjoy. The sculpture has been installed, and crews are putting the finishing touches on the structure. While we expect it to be ready for play soon, exact timing may vary—so keep an eye out on the park and City channels for updates.

What began as a small idea in 2022 has grown into a colorful, interactive landmark that's already turning heads. We're excited for families to enjoy this unique addition to R Park for years to come!



City Events & Holidays

Mayor's Tree Lighting & Brinner with Santa
December 3, 6 PM
@ Roeland Park Community Center

Christmas Eve & Day
December 24 & 25 All Day
City Offices Closed

Trash Amnesty Days
December 26-27, 29-31
City-Wide

New Years Day
January 1, All Day
City Offices Closed

Martin Luther King Jr. Day
January 19, All Day
City Offices Closed



Holiday Family Adoption

The City of Roeland Park is collaborating with Roesland Elementary and the City of Mission to provide holiday meals and gifts for local families in need. We kindly ask for your assistance to provide meals and gifts for these families. If you are interested in contributing, please reach out to **Kelley Nielsen** at knielsen@roelandpark.org or call 913-722-2600 to join our email list. She will contact you with information on how you can help. Thank you for your generosity in supporting your neighbors during this holiday season!



Help Keep Roeland Park Walkable This Winter!

A friendly reminder as winter approaches: City code requires sidewalks to be cleared of snow and ice within 48 hours after a snowfall. (The only exception is residential properties on the west side of Roe Boulevard.)

Keeping sidewalks clear helps neighbors of all ages stay safe, especially kids walking to school and those with mobility challenges. Thank you for doing your part to make Roeland Park welcoming and walkable—snow or shine!

ROELAND PARK EMPLOYEE ENGAGEMENT TEAM



WINTER COAT DRIVE

Scarves | Gloves | Hats | Coats | Blankets

NOVEMBER 17- DECEMBER 19

DROP OFF LOCATIONS

CITY HALL- 4600 W. 51ST ST

RP COMMUNITY CENTER- 4850 ROSEWOOD DR

RP Holiday Tree Lighting & Brinner with Santa



Wednesday, December 3rd

Roeland Park Community Center
4850 Rosewood Drive

6:00 PM Tree Lighting

Join us inside for holiday carols with Roesland Elementary's choir. Stay for **PHOTOS & PANCAKE DINNER WITH SANTA** & his City Council Elves!

Questions? Call City Hall at 913-722-2600.





ROELAND PARK COMMUNITY CENTER

50 Plus Program Highlights

Let's Get Trivial

December 9, 1:30 pm, 1- 2 hr. event

\$6 / \$7 nonresidents

Get ready for the ultimate trivia showdown! Test your knowledge on movies, music and more!

From Grain to Griddle: Fresh Flour & Pancake Workshop

January 13, 10:30 am, 1 - 1 hr. class

\$18/ \$20 non-residents

NEW! Discover the magic of milling your own flour in this hands-on class! Learn how to use a grain mill to turn whole grains into fresh, nutritious flour, then whip up delicious homemade pancakes topped with rich Canadian maple syrup.

Chair Yoga

January 7, 9 am, 4 - 50 min. sessions

\$36 / \$40 nonresidents

LOW INTENSITY: Take yoga off the mat and onto the chair, incorporating breathing with movement while retaining all the benefits of yoga. Beginners are welcome.

Balance and Core Yoga

January 7, 10 am, 4 - 50 min. sessions

\$36 / \$40 nonresidents

NEW! Build strength, stability, and confidence from the inside out. This gentle yet effective yoga class is designed to improve balance, strengthen your core, and enhance overall mobility. All levels welcome. Modifications provided.

Program Registration and Front Desk:

(913) 826-3160

Sports Dome: (913) 362-8700

Please call for open gym and court rental availability.

Community Center Office Hours

Monday - Friday: 7am - 5pm

Sat - 8am - 1pm

Sunday - closed

Visit us at JCPRD.COM/ACTIVITIES to register.

WWW.FACEBOOK.COM/ROELANDPARKCOMMUNITYCENTER

NEW to RPCC this fall! Adult fitness and Youth Programs!

Adult Fitness

Restorative Yoga

January 8, 5:15 pm, 4 - 50 min. sessions

\$38 / \$42 nonresidents

NEW! Restorative yoga is a gentle, nurturing practice designed to help you relax deeply, reduce stress and anxiety and recharge. It's the perfect antidote to a busy, high-stress lifestyle. Ages 18+.

Youth Programs

The Knight School Chess Team (Ages 6-12)

January 15, 6 pm, 17 - 1 hr. 15 min. sessions

\$425 / \$430 nonresidents

Perfect for elementary-age students, this high-energy chess class is packed with fast-paced games, colorful silicone wristbands to collect, zany movie days, fun tournaments, and an engaging tactics-based curriculum.

Preschool

Multi-Sport: Amazing Athletes (Ages 3-5)

January 9, 10 am, 7 - 45 min. classes

\$144 / \$158 nonresidents

Amazing Athletes uses a multi-sport program to introduces the fundamentals of 10 different sports in a non-competitive environment. Children in Amazing Athletes routinely gain greater confidence, learn to combine fitness with fun, and develop 6 key motor skills. Equipment provided. Please wear closed-toe shoes.

Early Learning: Bright Lights & Beautiful Colors (Ages 2-5 with Adult)

January 30, 10:30 am, 1 - 45 min. class

\$6 / \$7 nonresidents

Discover the ways that light brightens the world around us through a story, craft, and experiment! Program includes a snack to go with the activities.

50 Plus Program Weekly Schedule

Programs held at 4850 Rosewood Dr. Roeland Park KS

50 Plus programs with an * must register in advance

Monday

HATHA YOGA* 4pm
CANASTA (1st Monday)
1pm

Tuesday

KNITTING GROUP
1pm

Wednesday

DROP IN PAINT GROUP
9:30 am

Thursday

MAH JONGG 1pm
HATHA YOGA* 4pm
TAI CHI* 5pm

Friday

HOBBY GROUP
1pm

DEI Spotlight

(Diversity, Equity & Inclusion)

Happy Holidays, Roeland Parkers!

As the year comes to a close, we celebrate the many traditions that bring light, warmth, and community to this season. Whether you observe Christmas, Hanukkah, Yule/Winter Solstice, New Year's, or other holidays, we wish you joy and connection with those you love. Thank you for contributing to the vibrant, diverse spirit that makes Roeland Park such a wonderful place to call home.

Holidays of Light – Celebrating Traditions Around the World

- St. Nicholas Day – December 6: A Christian tradition honoring generosity, often with small gifts and treats.



- Hanukkah – December 14–22: The Jewish Festival of Lights, celebrating perseverance and hope through nightly menorah lighting.
- Winter Solstice/Yule – December 21: Welcoming the return of longer days with candles, fires, and evergreens.
- Christmas – December 25: Celebrated with lights, candles, and displays symbolizing joy and warmth.
- New Year's – December 31 & January 1: Festivities and fireworks mark fresh beginnings around the world.

Upcoming Events

- Powell Gardens Festival of Lights | Nov. 20–Jan. 3: Stroll through a spectacular outdoor light display. Details: powellgardens.org
- Frosty Fun Family Bingo | Dec. 12, Roeland Park Community Center. Dinner at 5:30 p.m., bingo to follow. Register by 12/5 at jcprd.com
- Winter Solstice Celebration | Dec. 20, Ernie Miller Park. Luminary-lit trail walk, fireside stories, marshmallows, and more. Details: jcprd.com

Get Involved!

Help shape an inclusive future for our city—join the Roeland Park DEI Committee. Just one hour a month can make a difference. Email diversityequityandinclusioncommittee@roelandpark.org to learn more.

Warmest wishes for a bright and hopeful new year!

The Doctor IS ON PATROL

Roeland Park is proud to have a part-time officer program that brings skilled, certified law enforcement professionals to our community — including some with remarkable day jobs.

One of them is Dr. Jonathan R. Enriquez, MD, FACC, a cardiologist who serves as Director of the Cardiology Fellowship Program at UMKC and Director of Cardiovascular Education at Saint Luke's. Since 2022, he has also dedicated his time to serving Roeland Park residents as a part-time police officer.

Dr. Enriquez says policing allows him to extend his commitment to helping others beyond the hospital. "Balancing both careers does require a lot of time, but I find it both challenging and rewarding," he shared. He credits supportive leadership in both fields for making it possible.

A passionate advocate for first responder wellness, Dr. Enriquez notes that law enforcement officers have a life expectancy 22 years shorter than civilians, often due to heart disease. Improving officer health, he says, strengthens the entire community.

In October 2025, he represented Roeland Park at the International Association of Chiefs of Police Conference in Denver, presenting on stress, cardiovascular disease, and protective strategies, and was re-elected Secretary-Treasurer of the IACP Police Physicians Section.

We're grateful for Dr. Enriquez's exceptional service — both in medicine and on the streets of Roeland Park.



Dr. Enriquez presenting at the International Association of Chiefs of Police Conference in Denver.



"Silent Majesty" - Brittnee Wood

George R. Schlegel Gallery Shows

Be sure to check out our current and upcoming shows in the George R. Schlegel Gallery, located in City Hall.

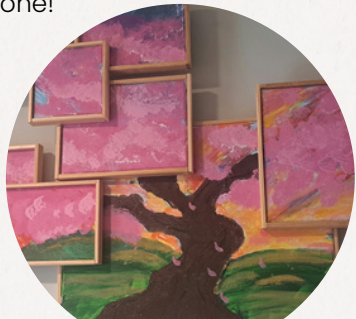
Roeland Park Artist Invitational

The Arts Advisory Committee is proud to feature **15 Roeland Park artists** now until January 3, 2026. Works include sculpture, mixed media, photography, illustration and acrylic, watercolor, quilting and more.

JCDS Emerging Artists

The gallery will feature works from **Johnson County Developmental Supports Emerging Artists** program in January and February, 2026. JCDS Emerging Artists are adults with developmental disabilities who are driven to create art.

Be sure to check out both exhibits at the Schlegel Gallery in City Hall before they are gone!



"Where the Earth & Sky Meet" - Daniel McLean, JCDS Emerging Artist



1st place winners of the Sculpture Contest: Andie & Charlie Van Towle with the Mayor and City Council

2025 Arts Advisory Committee Year in Review

The Arts Advisory Committee had a productive and creative year, and we're excited to share some highlights:

- Advanced the City's new Public Art Master Plan, installed rain-activated art, and continued maintenance of six sculptures and portions of the R Park mural.
- Hosted the annual Holiday Decorating Contest and began updating our bilingual arts brochure.
- Partnered with developers and the project artist on The Rocks development to provide feedback on the public art planned for the site.
- Held numerous exhibitions and artist receptions in our gallery.
- Launched a highly successful front yard sculpture contest that engaged residents across the community.

Sculpture Contest Winners

- 1st Place: Charlie & Andie Van Towle
- 2nd Place: Kara Steen
- 3rd Place: Brittnee Wood
- 4th Place: Mark Mohr
- Honorable Mentions: Sarah Martin, Steve Moser, Susie Wolff & Margaret Hanzlick-Burton

Thank you to our community for your continued support of the arts. You help make Roeland Park the vibrant, creative city it is.



Holiday Decorating Contest

Join the fun and win prizes! The Arts Committee is hosting its annual holiday decorating contest. Signup on our website by Dec. 14th. Judging will take place on Dec. 15th. 1st Place gets \$150, 2nd \$125, 3rd \$100, 4th \$75. Judging is based on creativity, use of inflatables (optional) and overall appeal. Good luck!



Project RISE Business Spotlight: Imagine Radiant Skin Therapy



What is your mission? At our studio, everyone is welcome—every age, every skin type, every story. We believe that skincare is not about perfection, it's about care, confidence, and connection. Our space is designed to be down-to-earth and judgment-free, where you can show up exactly as you are and feel truly seen and supported.

Why do you like doing business in Roeland Park? Roeland Park is a unique, community-centered gem! It is multicultural and diverse. Being surrounded by people with different backgrounds, traditions, and perspectives inspires me daily and reminds me how much we learn from one another. Our differences make us stronger, and I feel grateful to be part of a community where everyone has a story worth celebrating.

What would you like people to know about your business? We take pride in using clean, plant-based ingredients that honor both the skin and the planet. Every treatment is grounded in science, guided by nature, and personalized to meet your unique needs.

Our philosophy is simple: real people, real skin, real results. We're here to help you feel comfortable in your skin—not to change who you are, but to help you shine as your most authentic self.



Project RISE is the City's Business Development program that focuses on supporting the small business community in Roeland Park. The Business Spotlight features a local business in our community. Want to learn more? Check out ProjectRiseRP.com! To nominate a business to be featured in a future issue of the Roeland Parker, please visit roelandpark.org and search "Business Feature."



City Contacts



Search

City Administrator - Keith Moody
kmoody@roelandpark.org

Finance Director/Asst. City Administrator -
Jennifer Jones-Lacy
jjones-lacy@roelandpark.org

City Clerk- Kelley Nielsen
knielsen@roelandpark.org

Chief of Police- Cory Honas
chonas@roelandpark.org

Director of Public Works - Donnie Scharff
dscharff@roelandpark.org

Mayor - Michael Poppa
mpoppa@roelandpark.org
(913) 722-2600

Ward 1 - Jan Faidley
jfaidley@roelandpark.org
(913) 709-6812

Ward 1 - Tom Madigan
tomrpks@gmail.com
(913) 526-6997

Ward 2 - Jen Hill
jhill@roelandpark.org
(913) 722-2600

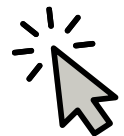
Ward 2 - Benjamin Dickens
bdickens@roelandpark.org
(913) 544-1259

Ward 3 - Emily Hage
ehage@roelandpark.org
(913) 722-2600

Ward 3 - Kate Raglow
kraglow@roelandpark.org
(913) 722-2600

Ward 4 - Debbi Schraeder
dschraeder@roelandpark.org
(913) 722-2600

Ward 4 - Matt Lero
mlero@roelandpark.org
(913) 722-2600



Winter Warriors

Program connects volunteers with those who need help shoveling



Winter Warriors started in early 2025 to help those in need of residential snow removal. The intent of the program is for volunteers in Roeland Park to sign up and help their neighbors with their snow removal.

To qualify in receiving help you must be over the age of 60, disabled, or otherwise physically unable. You can find details on how to volunteer or sign up for help on our website (www.roelandpark.org) or social media. Please note that signing up for snow removal doesn't guarantee a match with a volunteer.

Solid Waste Service Updates for 2026

Roeland Park residents will see a few service updates next year through its renewed agreement with GFL Environmental. These include:

- **Yard Waste:** Up to 10 bags/bundles/containers per week, with 20-item limits during spring and fall amnesty weeks.
- **Bulky Items:** Three items may be set out once per month on the second full week of the month. That means the following weeks in 2026: Jan 12 -16, Feb 9 - 13, March 9 - 13, April 13 - 17, May 11 - 15, June 8 - 12, July 13 - 18, Aug 10 - 14, Sept 14 - 18, Oct 12 - 16, Nov 9 - 13, Dec 14 - 18.
- **Diversion Rebate:** The City will continue earning rebates for materials diverted from the landfill—including curbside leaf collection and glass recycling—estimated at \$14,000 annually.
- **Technology Improvements:** GFL will collaborate with the City on evaluating tools like on-board GPS and routing systems to further enhance service quality.

Roeland Park's solid waste rates have averaged just 1.56% in annual increases over the past five years, well below rates of neighboring cities, helping ensure residents continue receiving excellent value for high-quality services.