

February/March 2026

THE ROELAND PARKER

Official Newsletter of the City of Roeland Park



This issue:

Page 2:

Letter from the Mayor
2025 Resident Survey

Page 3:

Donation Thanks
Food for Fine\$
JCDS Artists
Mosquito Control Pilot

Page 4:

Community Center News

Page 5:

DEI Spotlight
Summer Pool Jobs

Page 6:

Meet RP's Newest Staff
Bulky Item Pick up
Ripple Reminder

Page 7:

Elected Officials

Page 8:

City Contacts
Calendar

Results Are In: 2025 Resident Survey

The City's 2025 Resident Survey shows Roeland Park residents remain highly satisfied, with 95% rating the City as a good or excellent place to live. Public safety, parks, and core services continue to perform well, while resident feedback will help guide future priorities such as development, code enforcement, and sidewalk maintenance. Learn more about the survey results in the Mayor's Letter on page 2.



MARCH 1-31

Join us in supporting local families by donating **new** socks to benefit Roesland Elementary and FosterAdopt Connect. Drop off items at City Hall or the Community Center by the end of March.

LETTER FROM THE MAYOR

Hey RP,

As we begin a new year, I want to thank our residents for continuing to make Roeland Park such a welcoming and connected community.

The results of the City's 2025 Resident Survey reaffirm what many of us already know. Roeland Park remains a place people are proud to call home. 95% of respondents rated our city as a good or excellent place to live, with strong satisfaction reported for public safety, parks and recreation, solid waste services, and overall quality of life. When compared to regional and national benchmarks, Roeland Park continues to perform above average in almost every area.

The survey also helps guide our work ahead. Residents identified managing development, code enforcement, sidewalk maintenance, and continued investments in community safety as priorities. This feedback is invaluable and will play an important role in budgeting and long range planning.

I also want to extend a sincere thank you to everyone who participated in our Holiday Decorating Contest. Your creativity helped brighten our neighborhoods and made Roeland Park an even more festive place to be this season. Choosing the top entries was no easy task, and we thank the Arts Advisory Committee for organizing the contest and touring the city to view the displays. I'm sure I speak for most folks in the community when I say we are already looking forward to seeing what residents create next year.

Thank you for your continued engagement, pride, and participation in our community. Together, we are building a city that is vibrant, welcoming, and responsive to the people who call it home.

- Mayor Michael Poppa

What to Know



Perceptions and Ratings of the City Are High

Benchmarking

When compared to ETC Institute's Kansas City Metro and National Averages, Roeland Park performs above the averages in most of the areas assessed.



Overall Satisfaction with Town Services is Strong

Overall Services

Overall, Roeland Park performed well in key areas such as solid waste services, police services and parks and recreation.



Opportunities for Improvement for Roeland Park

Priorities for Improvement

The instrument was designed so ETC Institute could develop priorities for improvement. Development activities and code enforcement were highlighted areas for improvement.

95%

Respondents who rated Roeland Park as an "excellent" or "good" place to live.

90%

Respondents who rated Roeland Park as an "excellent" or "good" place to raise children

89%

Respondents who were "very satisfied" or "satisfied" with the overall quality of life in Roeland Park.

Congratulations to this year's Holiday Decorating Contest winners:



Evan Iliff



Amanda Britton-Carpenter



Jack Crane



Will Harris



Each winner received a check, certificate, and a custom plaque designed by Council Member Matt Lero.

THANK YOU!

Thank you to our incredible community for your generosity and kindness. Together, we donated more than 580 items to Shelter KC and Big Brothers Big Sisters.

Your support made a real difference through our Holiday Family Adoption, Winter Weather Clothing Drive, Food Drive, and Holiday Kindness Project. Because of you, local families and neighbors received help when it mattered most.

We are deeply grateful for every donation and for the continued support that makes these efforts possible. Thank you for helping build a stronger, more caring community.



The “**There’s a Better Way**” mosquito control pilot program was a success, with **295 residents** signing up to participate. According to the end-of-season survey, 71% of participants who used mosquito dunk buckets and did not spray their yards reported mosquito conditions were better or much better than in previous years. Results were even stronger when neighbors participated and standing water was regularly removed. Scan the QR code below to learn more, and watch the spring Roeland Parker for details on how to participate next summer.



Bring boxed or canned non-perishable food items to pay off your fines and help out your local community! Each single food item will count as \$5 off existing charges, up to \$50.



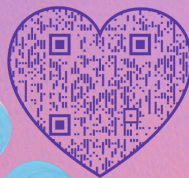
FEB 2-27

RP MUNICIPAL COURT
4600 W 51ST ST

JCDS ARTISTS

Papercrete Works is an employment program offered by JCDS. Papercrete is a construction material that consists of repurposed paper fibers (shredded, recycled newspaper), Portland cement and water. When combined it creates a lightweight, durable and unique material that promotes a cleaner environment.

Your Papercrete works purchase is helping provide community integrated employment for people with an intellectual or developmental disability, helping them lead more independent lives.



Emerging Artists is an art as employment program offered by JCDS. The artist collective consists of adult artists with IDD who are passionate and driven to create artwork. The Emerging Artists work in studio at the Johnson County Arts and Heritage Center from 9am-3pm Monday-Friday.

In addition to earning income artists have the door opened to equal citizenship, personal growth, communication, self-expression, and self esteem from the art program. The artists are seen as adult artists not as their disability.





ROELAND PARK COMMUNITY CENTER

Adult Program Highlights

Anti-Valentine's Junk Journal

February 11 @ 5:30 pm; 2 hr. event
\$20 / \$22 nonresidents

Ditch Valentine's Day this year in a fun and creative way! Avoid the romance and join a beginner-friendly course all about the art of basic bookmaking and junk journaling. All materials provided!

Total Body Tone

February 3 @ 1 pm; (4) 45 min. sessions
\$39 / \$43 nonresidents

This dynamic class held at the Roeland Park Community Center Fitness Center provides a full body workout, targeting all major muscles groups to help you tone, sculpt, and strengthen your physique.

Zumba®

February 7 @ 9 am; (5) 50 min. sessions
\$43 / \$48 nonresidents

Zumba® is a high-energy dance fitness class that combines Latin and international music with easy-to-follow choreography for a total body workout that feels more like a celebration than exercise.

Restorative Yoga

February 5 @ 5:15 pm; (4) 50 min. sessions
\$38 / \$42 nonresidents

Restorative yoga is a gentle, nurturing practice designed to help you relax deeply and recharge. Using supportive props like blankets & blocks, you'll hold restful poses seated or lying down for extended periods.

Community Center Office Hours

Mon - Fri: 7am - 5pm
Sat: 8am - 1pm
Sunday: Closed

Program Registration & Front Desk:

(913) 826-3160

Sports Dome:

(913) 362-8700

Please call for open gym and court rental availability.

To register, visit us at JCPRD.COM/ACTIVITIES – To learn more, check us out on Facebook @RoelandParkCommunityCenter

Keep active this winter with RPCC!

50 Plus

Meet, Move & Dance

February 5, 6:30 pm, 4 - 1.5 hr. sessions
\$45 / \$50 nonresidents

Classes focus on strong, enjoyable dance fundamentals, including rhythm, balance, connection, and lead-follow skills—the foundation of confident social dancing at every level.

Comedy Improv Class

February 9, 10 am, 10 – 1.5 hr. sessions
\$72 / \$74 nonresidents

Join us for a fun and engaging comedy improv class where you will learn to think on your feet, unleash your creativity, and build confidence in a supportive environment.

Youth

Mixed Martial Arts (Ages 6-12)

February 4 or March 4, 5 pm, 4 - 1 hr. lessons
\$38 / \$40 nonresidents

Looking for a fun, high-energy activity that builds your child's confidence, discipline, and fitness? Our Mixed Martial Arts (MMA) classes are the perfect blend of skill-building, self-defense, and character development.

Snapology: Wizards & Toy Tales Camp (Ages 5-12)

*These Camps are offered as a morning camp, an afternoon camp, or a full day camp.

February 16, 9 am OR February 16, 1 pm
\$75 / \$85 nonresidents (half day \$45 / \$50)

Through creative storytelling, hands-on building with LEGO® bricks, teamwork challenges, campers will use engineering skills and imagination to bring magical worlds to life!

50 Plus Program Weekly Schedule

Programs held at 4850 Rosewood Dr. Roeland Park, KS

Monday	Tuesday	Wednesday	Thursday	Friday
CANASTA	KNITTING GROUP	PAINT GROUP	MAH JONGG	HOBBY GROUP
(1st & 3rd Monday) 1pm	1pm	9:30 am	1pm	1pm

DEI SPOTLIGHT

(Diversity, Equity & Inclusion)

FEBRUARY IS BLACK HISTORY MONTH!

Black History Month is a time to celebrate and honor the rich cultural heritage, achievements, and contributions of Black Americans throughout history. It is a time to celebrate the lasting impact of Black leaders and communities while reflecting on equity, justice, and the stories that continue to inspire progress.

WAYS TO ENGAGE DURING BLACK HISTORY MONTH

- Support Black owned businesses by dining at local restaurants and sharing your favorites with friends and neighbors.
- Explore Black history in Kansas City by visiting museums, cultural sites, restaurants, and community resources that highlight both historical contributions and present day impact.
- Learn and take action on health equity. Black Americans are twice as likely to develop Alzheimer's disease compared to white Americans. The Alzheimer's Association offers free information and local resources. Visit alz.org/kansascity or contact hamorales@alz.org to learn more.



MARCH IS WOMEN'S HISTORY MONTH!

Women's History Month is a celebration of the achievements, contributions, and leadership of women throughout history. Held each March, it celebrates the women who have shaped our communities and advanced equality. It is a time to honor the past and present contributions of women and recognize their ongoing impact on a more equitable future.

WAYS TO ENGAGE DURING WOMEN'S HISTORY MONTH

- Learn about influential women in history through books, documentaries, or podcasts, and share what you discover with others.
- Support women owned businesses in Roeland Park and Johnson County, and look for opportunities to uplift women led organizations.
- Mentor or advocate for women in your workplace and community, and support efforts that advance equity through education, health, and policy.
- Celebrate the women in your life by recognizing their achievements and amplifying stories and work by women authors and creators.



The Roeland Park Aquatic Center is hiring for the upcoming summer 2026 season!

**WE'RE
HIRING!**

**LIFEGUARDS
SUMMER 2026**

Lifeguards

\$16/hr and up

Gain valuable certifications and emergency response skills with flexible summer scheduling.

Asst. Pool Manager

\$19/hr and up

Support staffing & daily pool operations while building leadership and supervisory experience.

Pool Manager

\$22/hr and up

Oversee daily pool ops., ensure safety for all patrons, and lead and supervise staff.

Apply Today!



Questions? Email Nathan Brungardt at nbrungardt@roelandpark.org



Meet **Brett Lindsey**

Skilled Maintenance Worker/ Equipment Operator

Q. What inspired you to get into Public Works?

I enjoy the variety of work Public Works offers and the opportunity to help and teach others. It is rewarding to do work that makes a visible difference in the community.

Q. Where were you before coming to Roeland Park?

I previously worked for Tyson Foods as a lead supervisor.

Q. What is your favorite thing so far about working for Roeland Park?

I appreciate the diversity of the work and the ability to help others and step in where needed. It has been rewarding to work in a collaborative, service-oriented environment.

Q. What do you like to do for fun?

I enjoy spending time with my grandkids.

Bulky Item Pick-up Reminder!

Bulky item pick-up calendar has been adjusted for 2026.



Three items may be set out once per month on the **second full week** of the month.

Friendly Curbside Ripple Reminder!

Residents can recycle glass containers through Ripple's curbside pick up on your **first** trash collection pickup day of each month! Recycling just one glass bottle saves enough electricity to light a 100-watt light bulb for four hours.

Sign up for collection day reminders at rippleglass.com/roeland-park or scan the QR code.



RippleGlass



Meet **Cece Riley**

Management Analyst



Q. What inspired you to get into local government administration?

I am passionate about serving the community and believe local government is where I can make the most meaningful impact. I was also inspired by my mom, who has spent her career in public service and showed me firsthand the value of leading with integrity, care, and purpose.

Q. Where were you before coming to Roeland Park?

I worked as a City Planner in Lawrence, Kansas for the past several years.

Q. What is your favorite thing so far about working for Roeland Park?

Roeland Park feels like a true keystone community within the Kansas City metro, with a character all its own. I am still early in my time here, but I am excited for what is ahead and eager to learn from residents and City Council how I can best serve this community.

Q. What do you like to do for fun?

I love being outdoors whenever I can, especially walking, gardening, or exploring nature. I also enjoy baking, rewatching The Office and Parks & Rec, and listening to a good audiobook.



FEBRUARY

2026

SUN	MON	TUE	WED	THU	FRI	SAT
1	2	3	4	5	6	7
8	9	10	11	12	13	14
15	16	17	18	19	20	21
22	23	24	25	26	27	28

MARCH

2026

SUN	MON	TUE	WED	THU	FRI	SAT
1	2	3	4	5	6	7
8	9	10	11	12	13	14
15	16	17	18	19	20	21
22	23	24	25	26	27	28
29	30	31				

City Council

Planning Commission

Bulky Item Pick-up

Roeland Park City Hall

4600 W 51st St

913-722-2600

www.roelandpark.org



City Contacts

Keith Moody, City Administrator
kmoody@roelandpark.org

Jennifer Jones-Lacy, Asst. City Administrator
jjones-lacy@roelandpark.org

Kelley Nielsen, City Clerk
knielsen@roelandpark.org

Cory Honas, Chief of Police
chonas@roelandpark.org

Donnie Scharff, Public Works Director
dscharff@roelandpark.org

Nathan Brungardt, Parks & Rec Superintendent
nbrungardt@roelandpark.org